

Suprofen - LC-UV

Waters Corporation



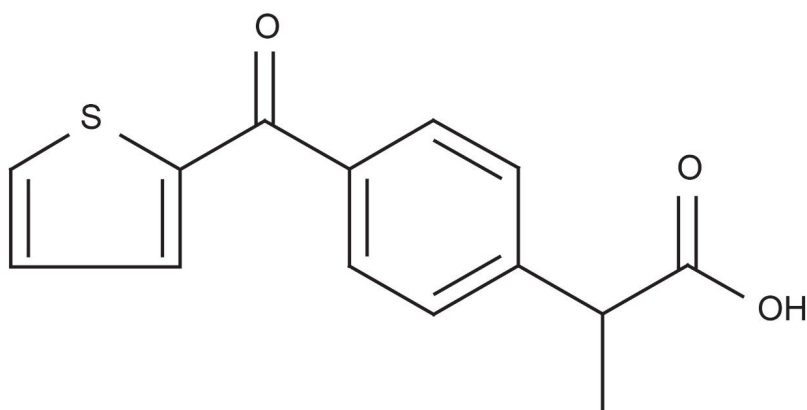
This is an Application Brief and does not contain a detailed Experimental section.

Abstract

This application brief demonstrates analysis of suprofen by LC-UV.

Introduction

The compound analyzed in this study is suprofen by LC-UV.



Suprofen

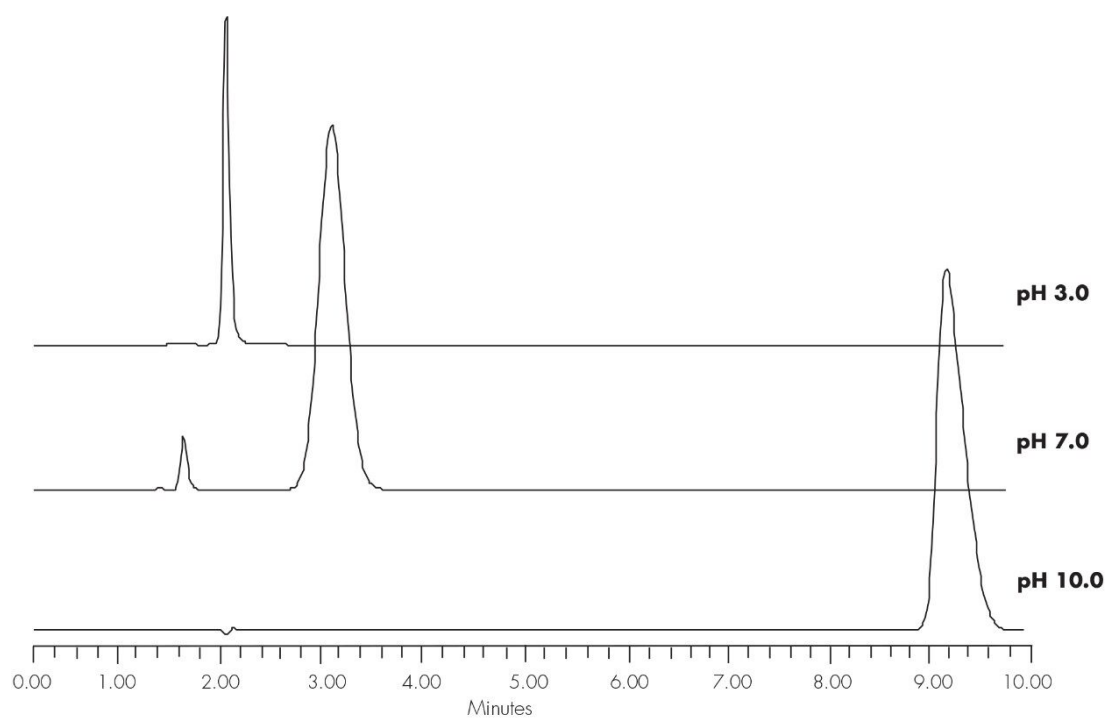
Experimental

Conditions

Column:	Xterra RP ₁₈ 4.6 x 150 mm, 5 µm
Part number:	186000492
Mobile phase:	pH 3.0: H ₂ O/ACN/100 mM NH ₄ COOH, pH 3.0 15:75:10 pH 7.0: H ₂ O/ACN/100 mM NH ₄ HCO ₃ , pH 7.0 50:40:10 pH 10.0 H ₂ O/ACN/100 mM NH ₄ HCO ₃ , pH 10.0

	75:15:10
Flow rate:	1.0 mL/min
Injection volume:	5 µL of 250 µg/mL
Temperature:	30 °C
Detection:	UV @ 280 nm
Instrument:	Alliance 2695, 2996 PDA
Mobile Phase pH	USP Tailing
3.0	1.2
7.0	1.06
10.0	1.55

Results and Discussion



Featured Products

Alliance HPLC System <<https://www.waters.com/534293>>

WA20738.102, June 2002