

응용 자료

Naptalam in Cucumber - LC-MS

Waters Corporation



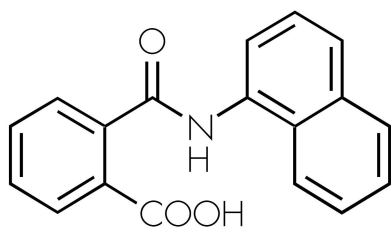
This is an Application Brief and does not contain a detailed Experimental section.

Abstract

This application brief highlights the analysis of naptalam in cucumber using XTrera MS C₁₈ columns.

Introduction

Naptalam in cucumber by LC-MS has been analyzed in this study.



Naptalam

Experimental

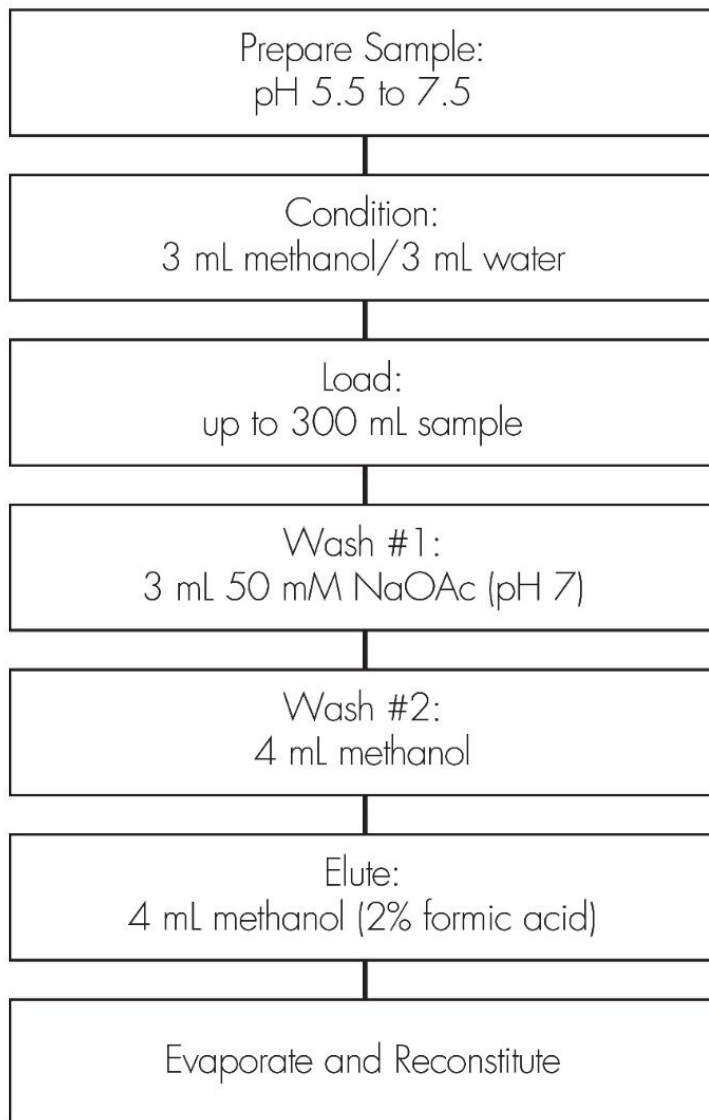
HPLC Conditions

Column:	XTerra MS C ₁₈ 2.1 x 100 mm, 3.5 μm (p/n: 186000404)
Mobile phase A:	10 mM CH ₃ COONH ₄ , pH 5.5
Mobile phase B:	ACN
Flow rate:	0.2 mL/min
Injection volume:	20 μL
Detection:	MS ESI+, Multiple Selected-Ion Recording (SIR)
Instrument:	Alliance 2695, 2996 PDA

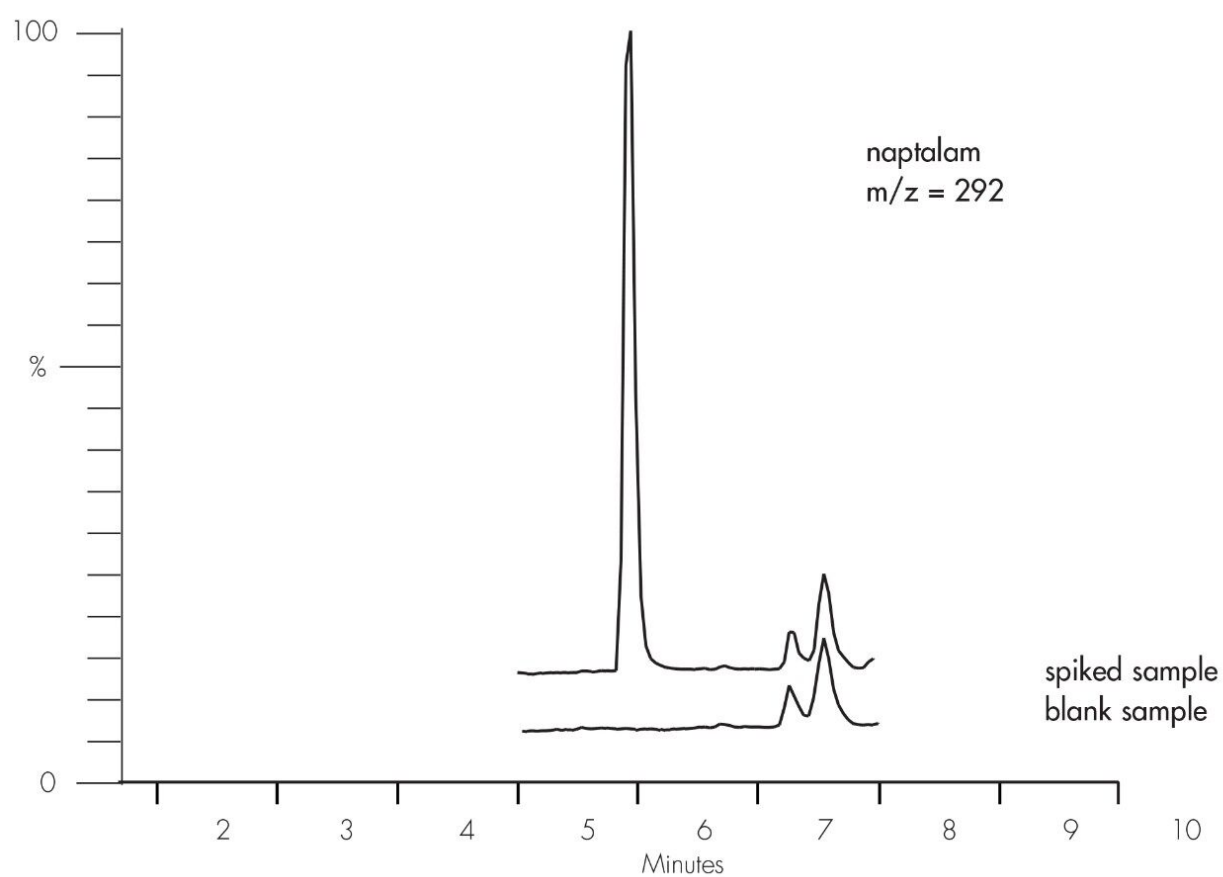
Gradient

Time (min)	Profile	
	%A	%B
0.0	75	25
6.0	10	90
10.0	10	90

Oasis® MAX Extraction Method
Conditions for Oasis® MAX Cartridge, 6 cc, 500 mg
Part Number 186000865



Results and Discussion



Featured Products

Alliance HPLC <<https://www.waters.com/514248>>

WA20738.076, June 2002

