

Naptalam in Cucumber - LC/UV

Waters Corporation



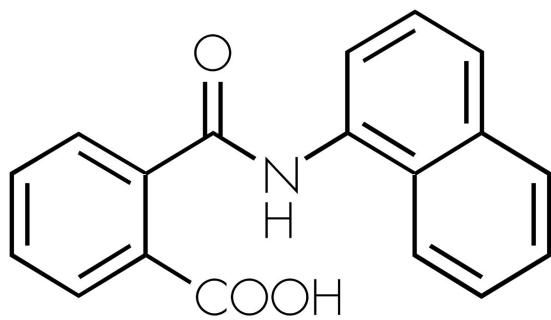
This is an Application Brief and does not contain a detailed Experimental section.

Abstract

This application brief highlights the analysis of naptalam in cucumber using XTerra RP₁₈ columns.

Introduction

Naptalam in cucumber has been analyzed in this study.



Naptalam

Experimental

HPLC Conditions

Column:	XTerra RP ₁₈ 4.6 x 100 mm, 3.5 µm (p/n: 186000438)
Mobile phase A:	10 mM CH ₃ COONH ₄ , pH 5.5
Mobile phase B:	ACN
Flow rate:	0.2 mL/min
Injection volume:	50 µL
Detection:	UV @ 290 nm

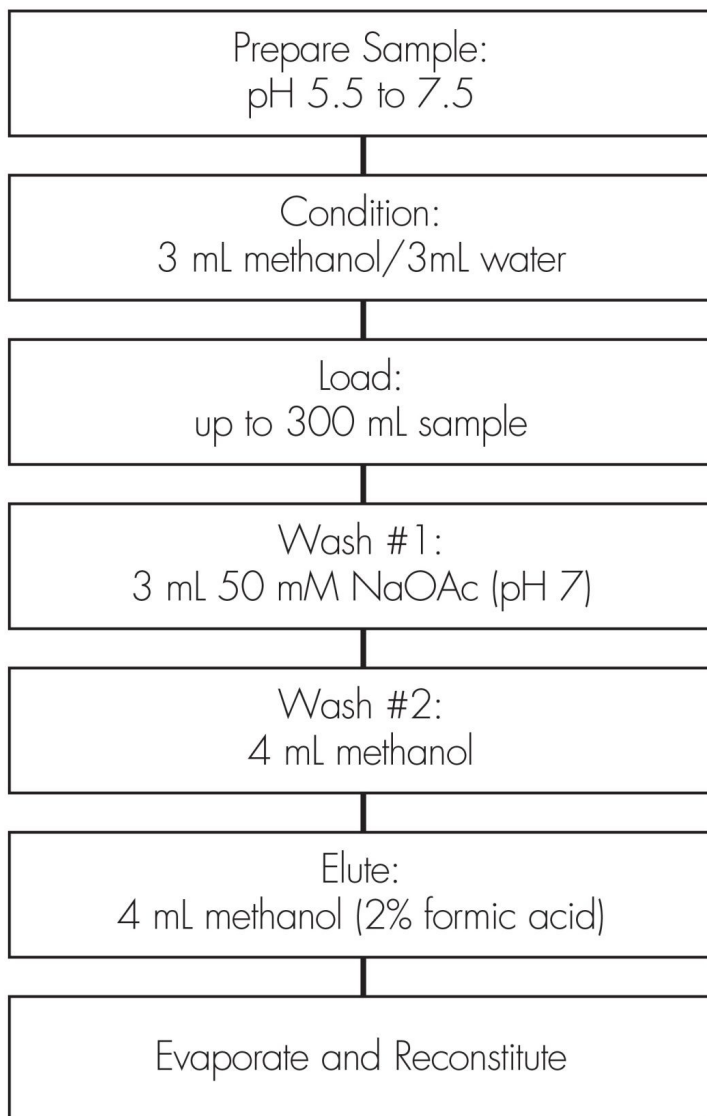
Instrument:

Alliance 2695, 2996 PDA

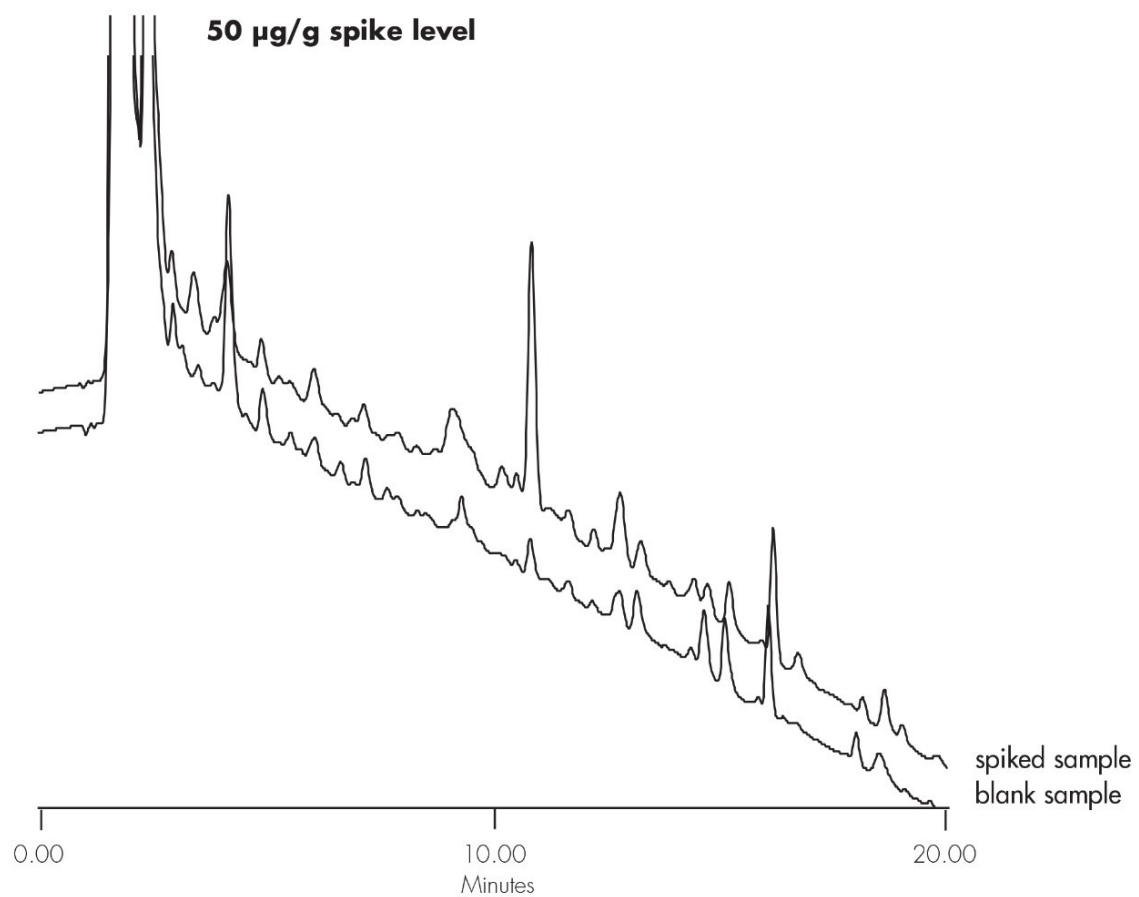
Gradient

Time (min)	Profile	
	%A	%B
0.0	80	20
20.0	20	80

Oasis® MAX Extraction Method
Conditions for Oasis® MAX Cartridge, 6 cc, 500 mg
Part Number 186000865



Results and Discussion



Featured Products

· [Alliance HPLC <https://www.waters.com/514248>](https://www.waters.com/514248)

WA20738.075, June 2002



© 2021 Waters Corporation. All Rights Reserved.