

Note d'application

## Naptalam in Cucumber - LC/UV

---

Waters Corporation



This is an Application Brief and does not contain a detailed Experimental section.

---

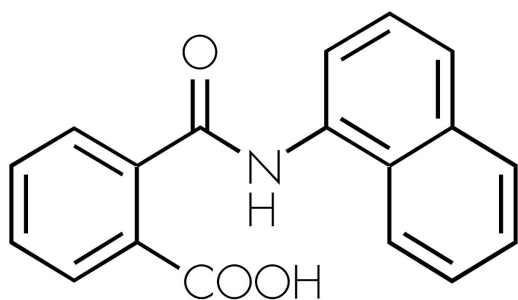
### Abstract

This application brief highlights the analysis of naptalam in cucumber using XTerra RP<sub>18</sub> columns.

---

## Introduction

Naptalam in cucumber has been analyzed in this study.



**Naptalam**

---

## Experimental

### HPLC Conditions

Column:	XTerra RP <sub>18</sub> 4.6 x 100 mm, 3.5 µm (p/n: 186000438)
Mobile phase A:	10 mM CH <sub>3</sub> COONH <sub>4</sub> , pH 5.5
Mobile phase B:	ACN
Flow rate:	0.2 mL/min
Injection volume:	50 µL
Detection:	UV @ 290 nm

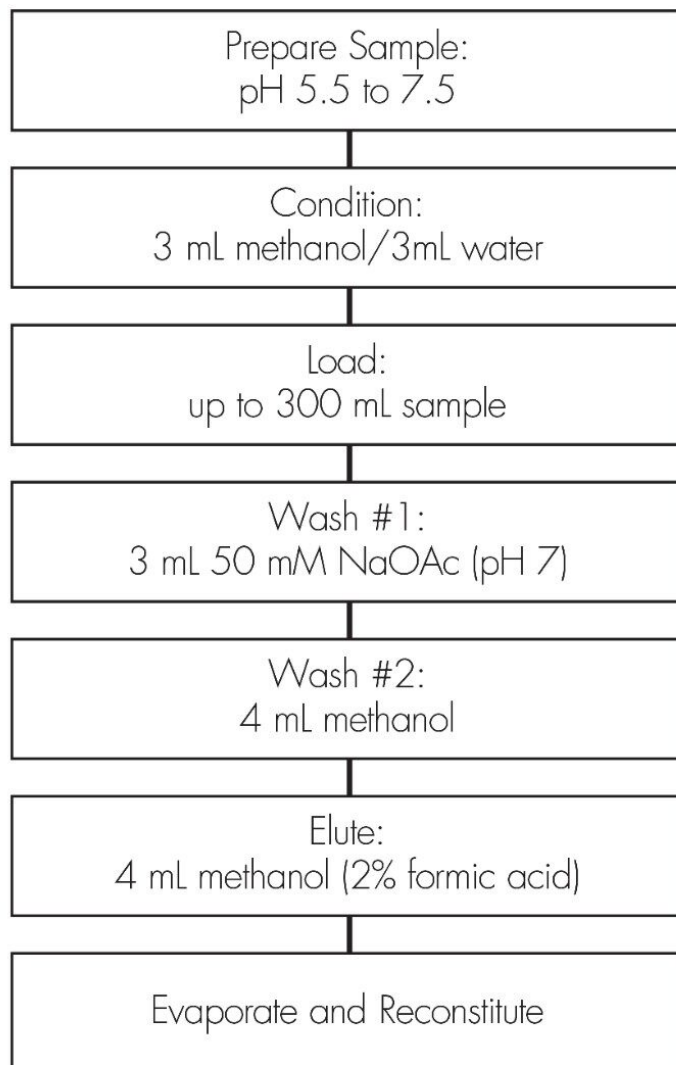
Instrument:

Alliance 2695, 2996 PDA

Gradient

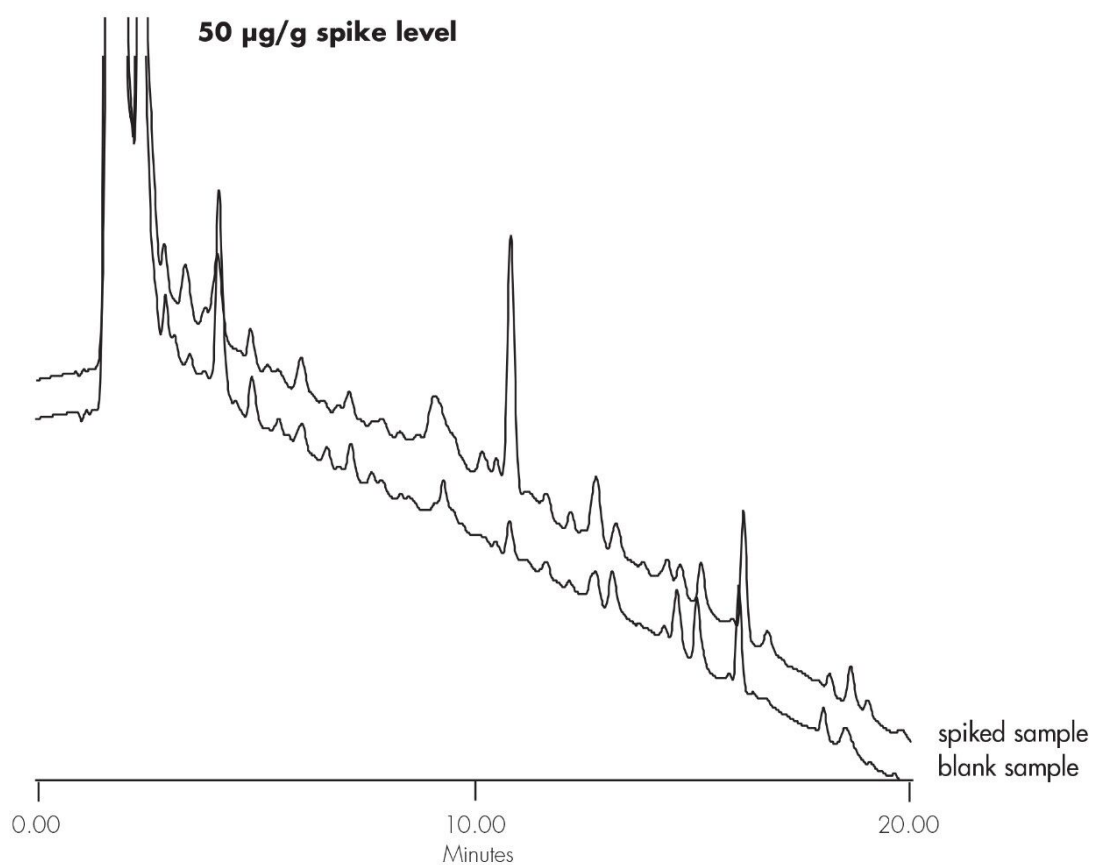
Time (min)	Profile	
	%A	%B
0.0	80	20
20.0	20	80

Oasis® MAX Extraction Method  
Conditions for Oasis® MAX Cartridge, 6 cc, 500 mg  
Part Number 186000865



---

## Results and Discussion



---

## Featured Products

Alliance HPLC <<https://www.waters.com/514248>>

WA20738.075, June 2002

