

## Nabumetone

---

Waters Corporation



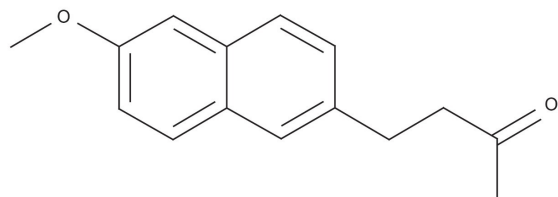
This is an Application Brief and does not contain a detailed Experimental section.

### Abstract

This application brief highlights the analysis of nabumetone using XTerra RP<sub>18</sub> columns.

## Introduction

Nabumetone has been analyzed in this study.



**Nabumetone**

## Experimental

### HPLC Conditions

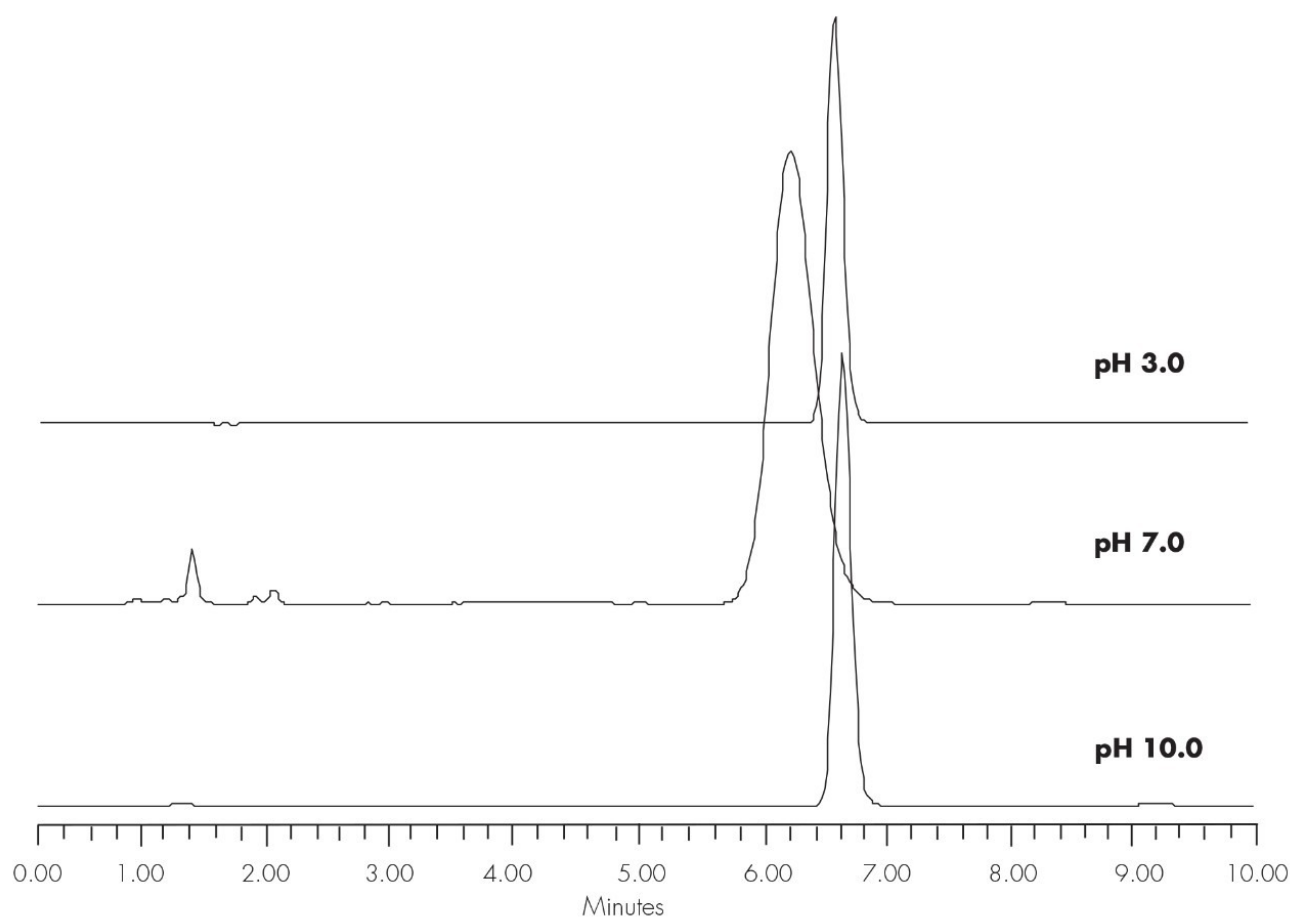
Column:	XTerra RP <sub>18</sub> 4.6 x 150 mm, 5 μm (p/n: 186000492)
Mobile phase:	At pH 3.0: H <sub>2</sub> O/ACN/100 mM, NH <sub>4</sub> COOH, pH 3.0, 40: 50: 10  At pH 7.0: H <sub>2</sub> O/ACN/100 mM, NH <sub>4</sub> HCO <sub>3</sub> , pH 7.0, 50: 40: 10  At pH 10.0 H <sub>2</sub> O/ACN/100 mM, NH <sub>4</sub> HCO <sub>3</sub> , pH 10.0, 40: 50: 10
Flow rate:	1.0 mL/min
Injection volume:	5 μL of 250 μg/mL
Temperature:	30 °C
Detection:	UV @ 210 nm

Instrument:

Alliance 2695, 2996 PDA

Mobile Phase pH	USP Tailing
3.0	1.09
7.0	1.12
10.0	1.10

## Results and Discussion



## Featured Products

· [Alliance HPLC <https://www.waters.com/514248>](https://www.waters.com/514248)

WA20738.073, June 2002



© 2021 Waters Corporation. All Rights Reserved.