

Nota de aplicación

Nabumetone

Waters Corporation



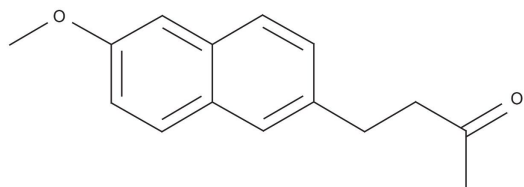
This is an Application Brief and does not contain a detailed Experimental section.

Abstract

This application brief highlights the analysis of nabumetone using XTerra RP₁₈ columns.

Introduction

Nabumetone has been analyzed in this study.



Nabumetone

Experimental

HPLC Conditions

Column:	XTerra RP ₁₈ 4.6 x 150 mm, 5 µm (p/n: 186000492)
Mobile phase:	At pH 3.0: H ₂ O/ACN/100 mM, NH ₄ COOH, pH 3.0, 40: 50: 10 At pH 7.0: H ₂ O/ACN/100 mM, NH ₄ HCO ₃ , pH 7.0, 50: 40: 10 At pH 10.0 H ₂ O/ACN/100 mM, NH ₄ HCO ₃ , pH 10.0, 40: 50: 10
Flow rate:	1.0 mL/min
Injection volume:	5 µL of 250 µg/mL
Temperature:	30 °C

Detection:

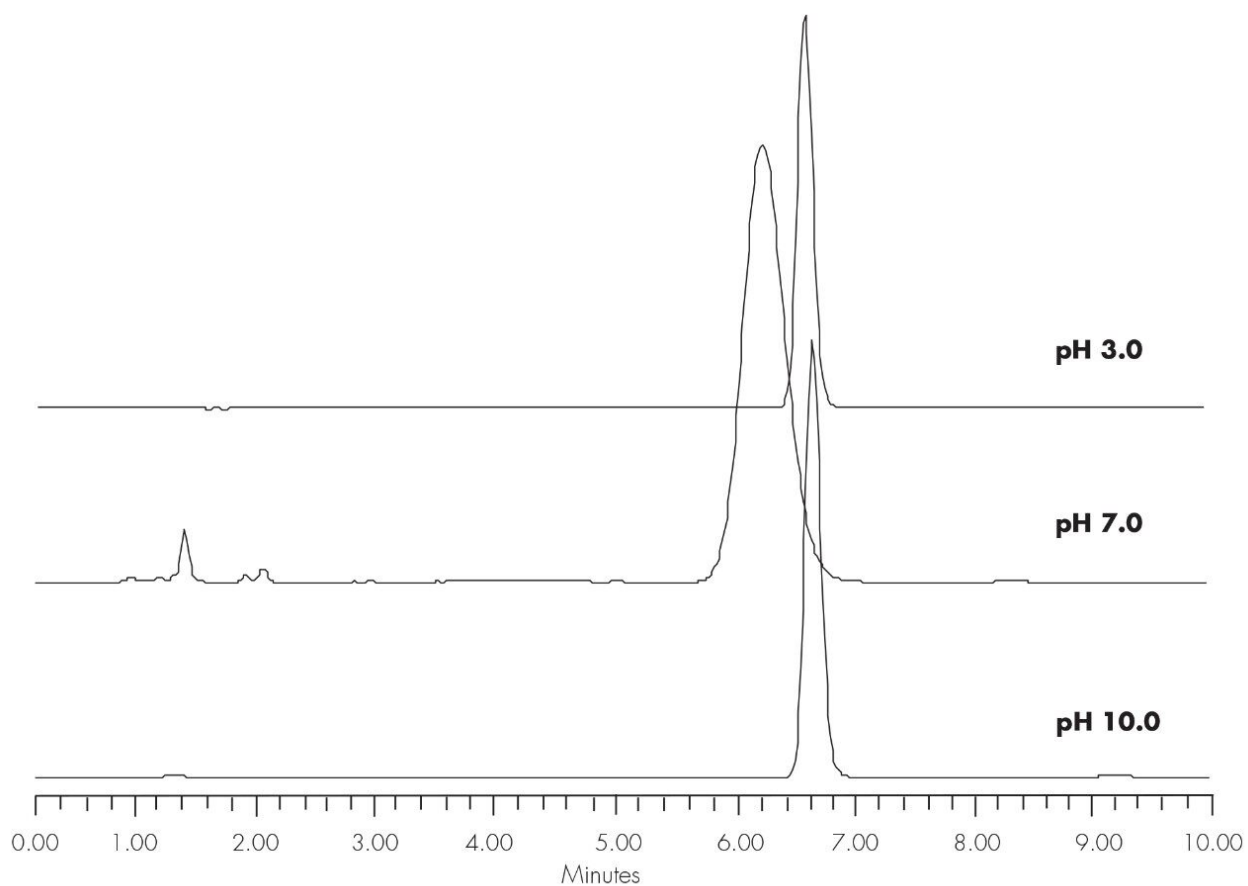
UV @ 210 nm

Instrument:

Alliance 2695, 2996 PDA

Mobile Phase pH	USP Tailing
3.0	1.09
7.0	1.12
10.0	1.10

Results and Discussion



Featured Products

Alliance HPLC <<https://www.waters.com/514248>>

WA20738.073, June 2002

© 2021 Waters Corporation. All Rights Reserved.