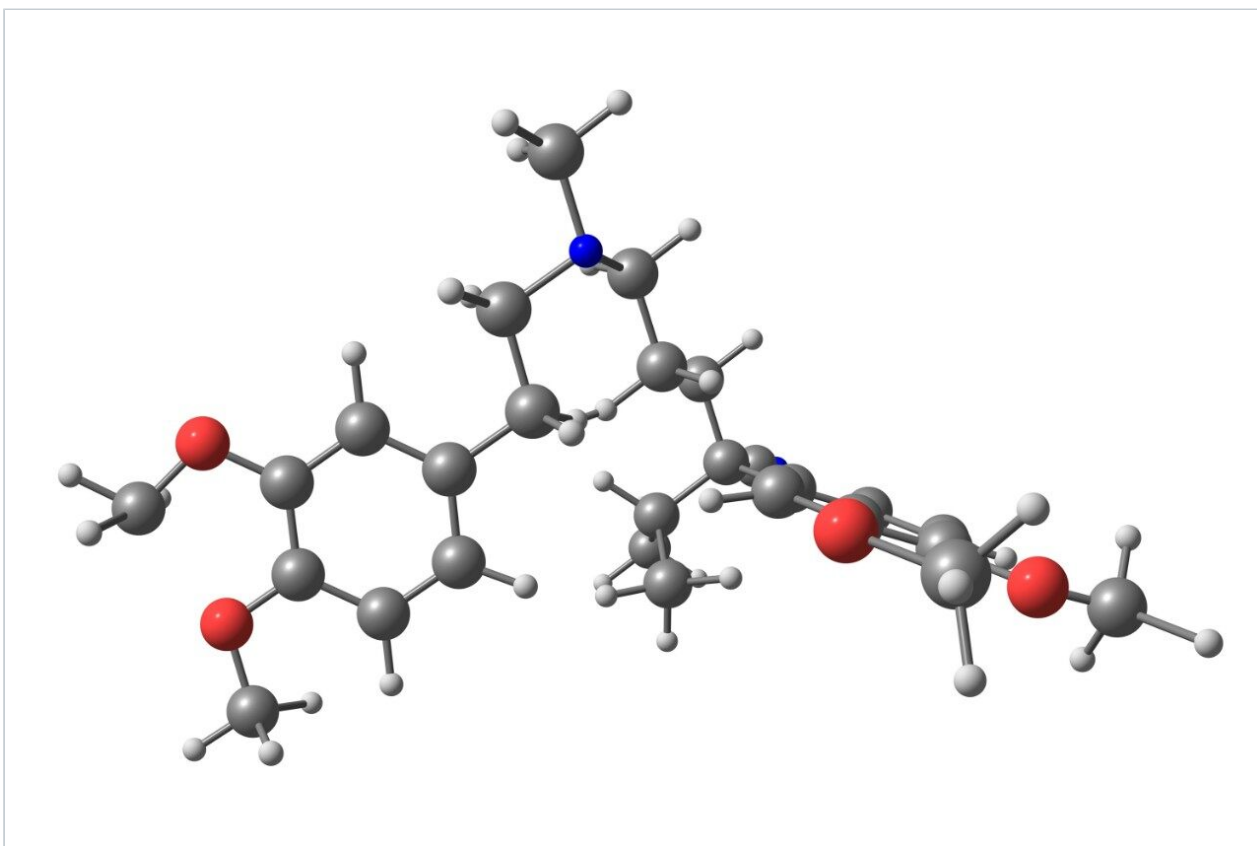


Nota applicativa

## Methoxyverapamil - pH 7.0, LC-MS

---

Waters Corporation



This is an Application Brief and does not contain a detailed Experimental section.

---

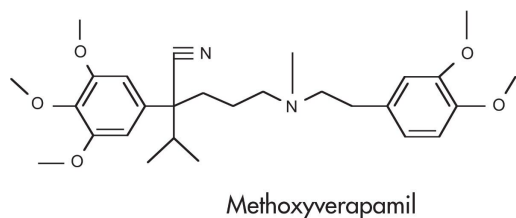
### Abstract

This application brief highlights the analysis of methoxyverapamil using XTerra MS C<sub>18</sub> columns.

---

## Introduction

Methoxyverapamil has been analyzed using LC-MS in this study.



---

## Experimental

### HLC Conditions

Column:	XTerra MS C <sub>18</sub> 2.1 x 30 mm, 3.5 μm (p/n: 186000398)
Mobile phase A:	20mM NH <sub>4</sub> HCO <sub>3</sub> in H <sub>2</sub> O, pH 7.0
Mobile phase B:	ACN
Isocratic mobile phase composition:	57%A; 43%B
Flow rate:	0.2 mL/min to MS
Injection volume:	20 μL of 100 pg/μL
Temperature:	Ambient
Detection:	MS ESI+, SIR 485.4

Instrument: Alliance 2795 HT, Micromass ZQ

## MS Conditions

MS sytem: Micromass ZQ

Ion source: ESI+

Capillary: 3.0 kV

Cone: 45 V

Extractor: 3.0

Source temp.: 150 °C

Desolvation temp.: 350 °C

Cone gas flow: 60 L/hr

Desolvation gas flow: 500 L/hr

LM Resolution: 15

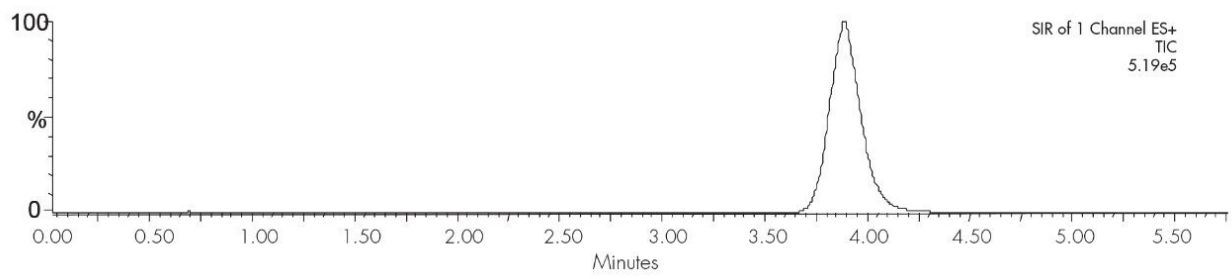
HM Resolution: 15

Ion energy: 1

Multiplier (V): 650

---

## Results and Discussion



## Featured Products

Alliance HPLC <<https://www.waters.com/514248>>

WA20738.068, June 2002

© 2021 Waters Corporation. All Rights Reserved.