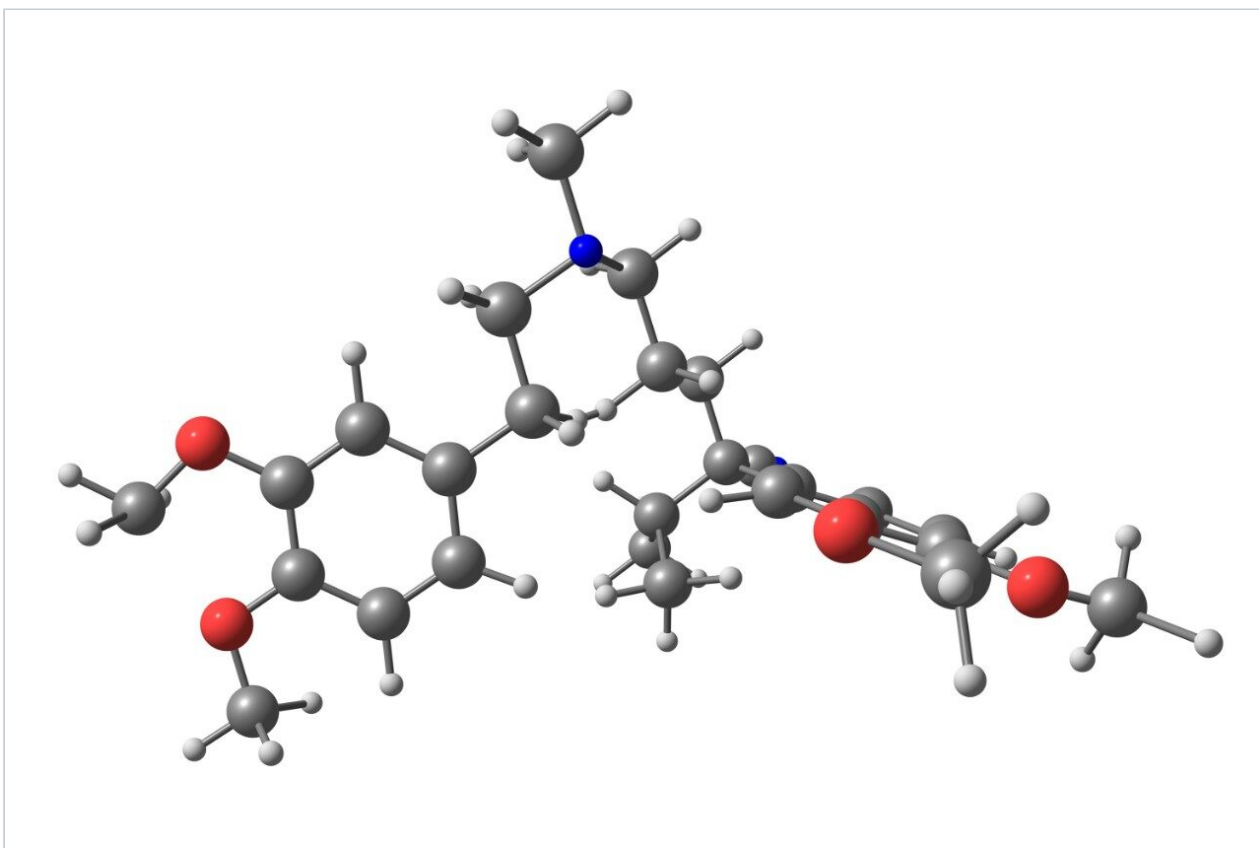


Methoxyverapamil - pH 7.0, LC-MS

Waters Corporation



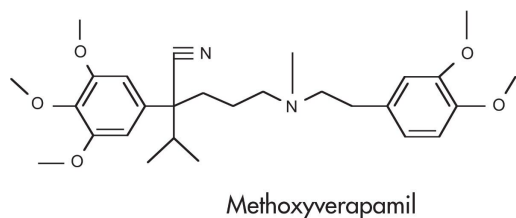
This is an Application Brief and does not contain a detailed Experimental section.

Abstract

This application brief highlights the analysis of methoxyverapamil using XTerra MS C₁₈ columns.

Introduction

Methoxyverapamil has been analyzed using LC-MS in this study.



Experimental

HLC Conditions

| | |
|-------------------------------------|-------------------------------------------------------------------|
| Column: | XTerra MS C ₁₈ 2.1 x 30 mm, 3.5 μm (p/n: 186000398) |
| Mobile phase A: | 20mM NH ₄ HCO ₃ in H ₂ O, pH 7.0 |
| Mobile phase B: | ACN |
| Isocratic mobile phase composition: | 57%A; 43%B |
| Flow rate: | 0.2 mL/min to MS |
| Injection volume: | 20 μL of 100 pg/μL |
| Temperature: | Ambient |
| Detection: | MS ESI+, SIR 485.4 |

Instrument: Alliance 2795 HT, Micromass ZQ

MS Conditions

MS sytem: Micromass ZQ

Ion source: ESI+

Capillary: 3.0 kV

Cone: 45 V

Extractor: 3.0

Source temp.: 150 °C

Desolvation temp.: 350 °C

Cone gas flow: 60 L/hr

Desolvation gas flow: 500 L/hr

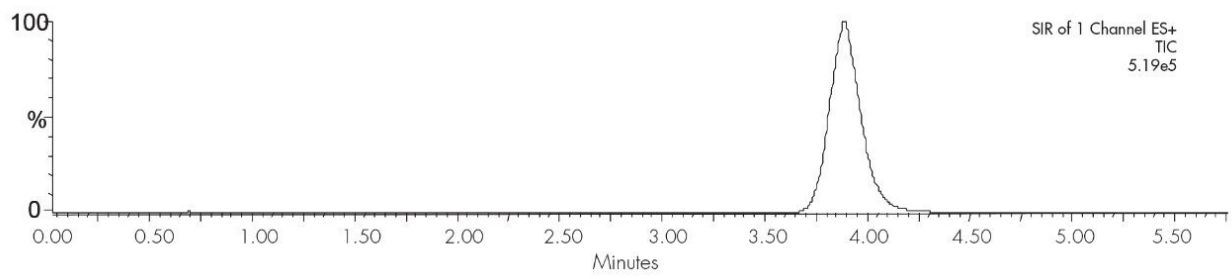
LM Resolution: 15

HM Resolution: 15

Ion energy: 1

Multiplier (V): 650

Results and Discussion



Featured Products

Alliance HPLC <<https://www.waters.com/514248>>

WA20738.068, June 2002