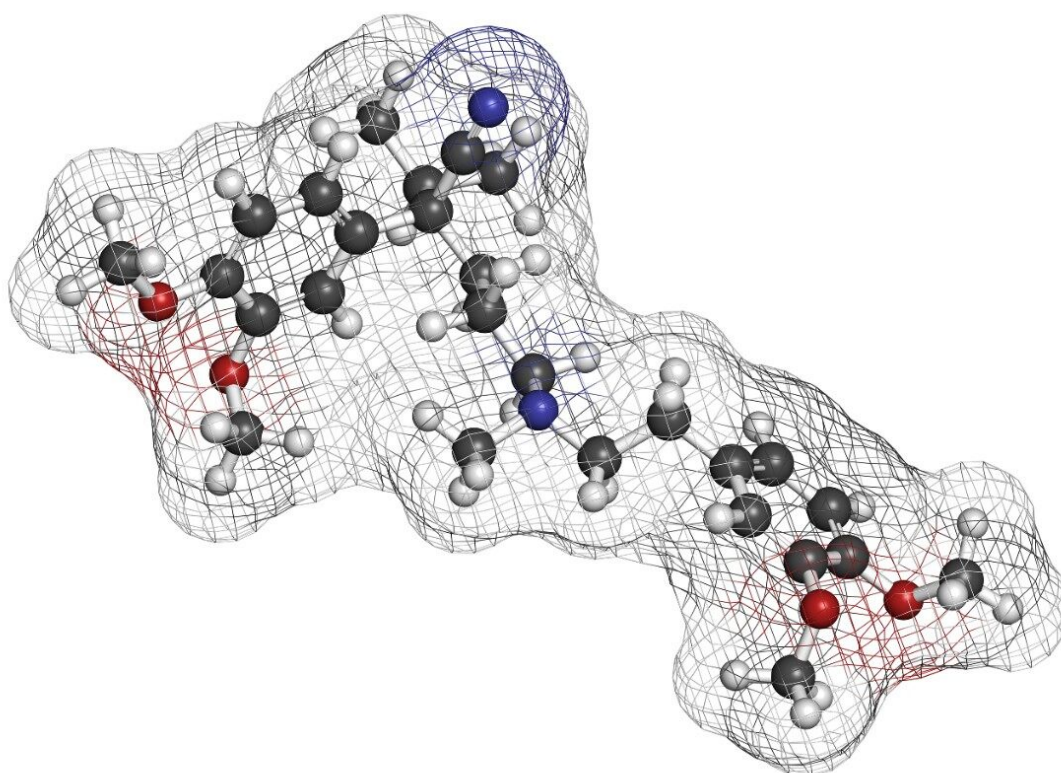


Nota applicativa

Methoxyverapamil- pH 2.5, LC-MS

Waters Corporation



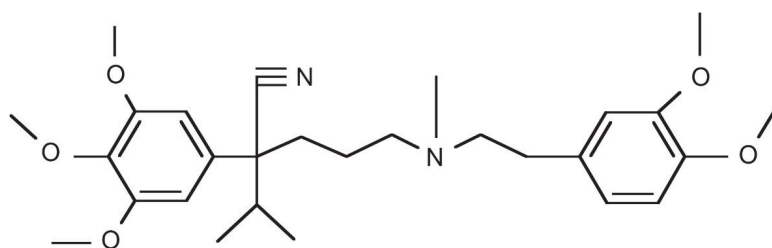
This is an Application Brief and does not contain a detailed Experimental section.

Abstract

This application note details on the analysis of methoxyverapamil using XTerra MS C₁₈ Columns.

Introduction

The compound analyzed in this study is methoxyverapamil.



Methoxyverapamil

Experimental

LC Conditions

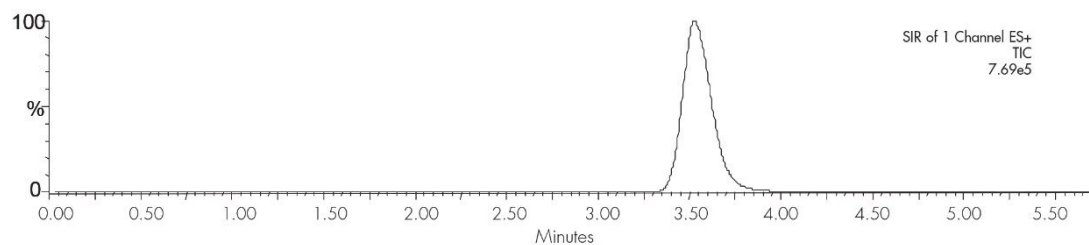
Column:	XTerra MS C ₁₈ 2.1 x 30 mm, 3.5 μm
Part number:	186000398
Mobile phase A:	0.1% HCOOH in H ₂ O, pH 2.5
Mobile phase B:	0.1% HCOOH in ACN, pH 2.5
Flow rate:	0.2 mL/min to MS
Isocratic mobile phase composition:	75%A; 25%B
Injection volume:	20 μL of 100 pg/μL
Temperature:	Ambient

Detection:	MS ESI+, SIR 485.4
Instrument:	Alliance 2795 HT, Micromass ZQ

MS Conditions

Micromass ZQ	ESI+
Capillary (KV):	3.0
Cone (V):	45
Extractor:	3.0
RF lens:	0.5
Source temp.:	150
Desolvation temp.:	350
Cone gas flow (L/Hr):	60
Desolvation gas flow (L/Hr):	500
LM resolution:	15
HM resolution:	15
Ion energy:	1.0
Multiplier (V):	650

Results and Discussion



Featured Products

WA20738.067, June 2002