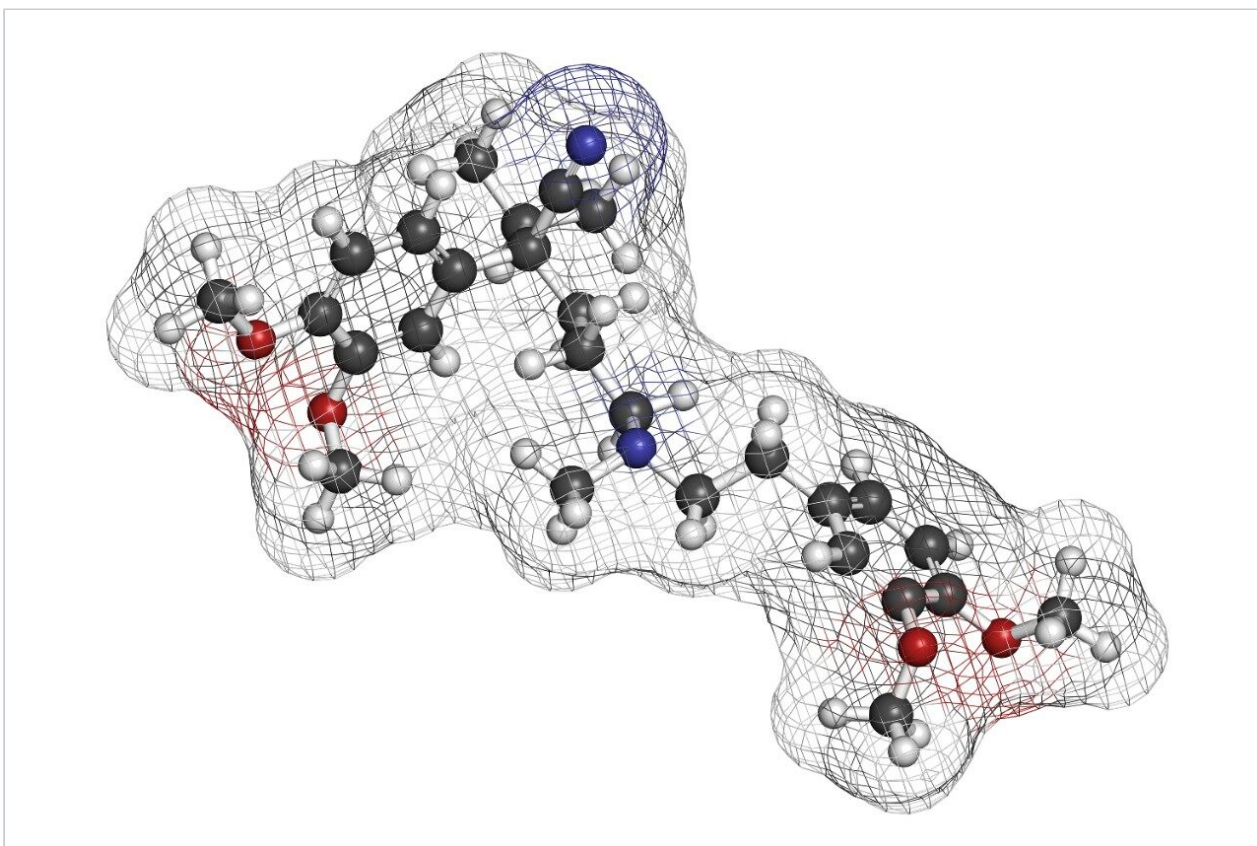


Methoxyverapamil

Waters Corporation



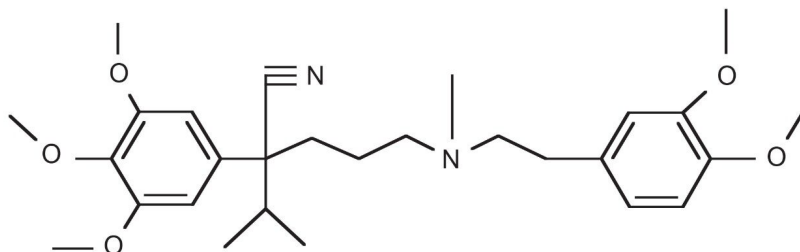
This is an Application Brief and does not contain a detailed Experimental section.

Abstract

This application note details on the analysis of methoxyverapamil using XTerra RP₁₈ Columns.

Introduction

The compound analyzed in this study is methoxyverapamil.



Methoxyverapamil

Experimental

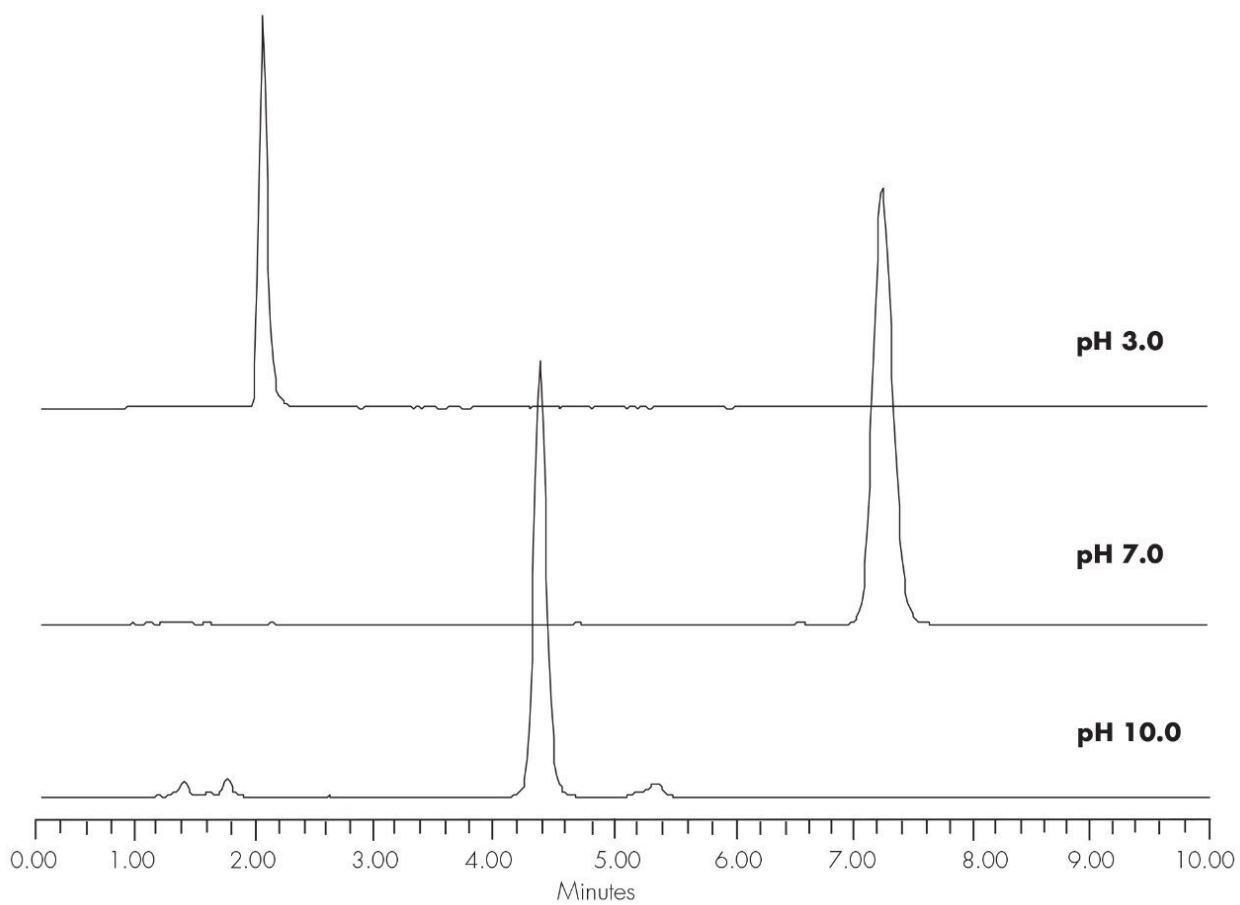
Conditions

Column:	XTerra RP ₁₈ 4.6 x 150 mm, 5 μm
Part number:	186000492
Mobile phase:	pH 3.0: H ₂ O/ACN/100 mM NH ₄ COOH, pH 3.0 30:60:10 pH 7.0: H ₂ O/ACN/100 mM NH ₄ HCO ₃ , pH 7.0 40:50:10 pH 10.0 H ₂ O/ACN/100 mM NH ₄ HCO ₃ , pH 10.0 28:62:10
Flow rate:	1.0 mL/min
Injection volume:	5 μL of 250 μg/mL

Temperature: 30 °C
Detection: UV @ 270 nm
Instrument: Alliance 2695, 2996 PDA

Mobile Phase pH	USP Tailing
3.0	1.25
7.0	1.11
10.0	1.1

Results and Discussion



Featured Products

Alliance HPLC System <<https://www.waters.com/534293>>

2998 Photodiode Array (PDA) Detector <<https://www.waters.com/1001362>>

WA20738.066, June 2002

© 2021 Waters Corporation. All Rights Reserved.