

Nota applicativa

Fluoxetine - LC/UV

Waters Corporation



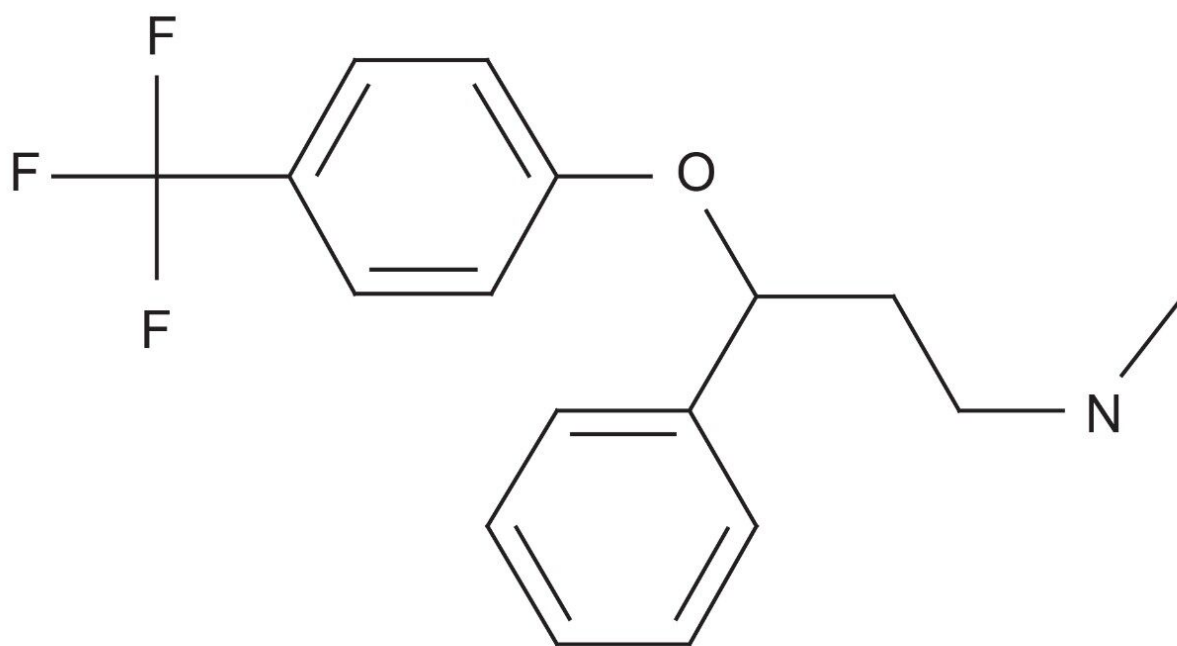
This is an Application Brief and does not contain a detailed Experimental section.

Abstract

This application brief highlights the analysis of fluoxetine using XTerra RP₁₈ Columns.

Introduction

The compound analyzed in this study is fluoxetine.



Fluoxetine

Experimental

Conditions

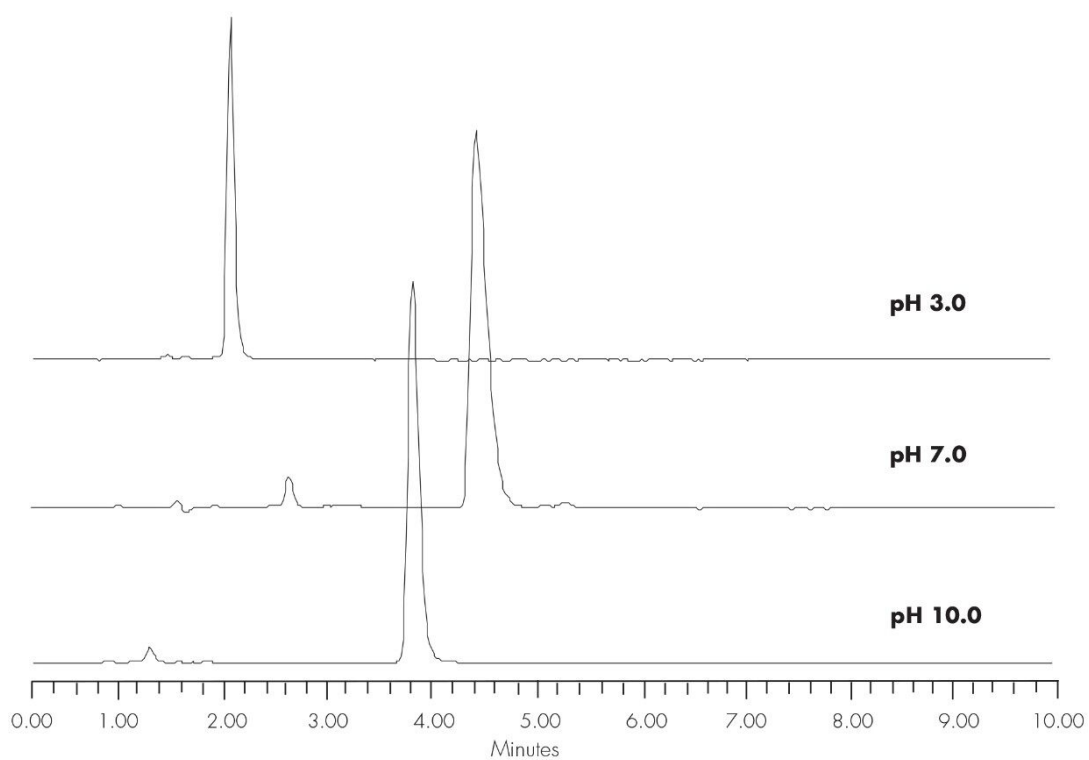
Column: XTerra RP₁₈ 4.6 x 150 mm, 5 μm

Part number: 186000492

Mobile phase:	pH 3.0: H ₂ O/ACN/100 mM NH ₄ COOH, pH 3.0 30:60:10 pH 7.0: H ₂ O/ACN/100 mM NH ₄ HCO ₃ , pH 7.0 40:50:10 pH 10.0 H ₂ O/ACN/100 mM NH ₄ HCO ₃ , pH 10.0 30:60:10
Flow rate:	1.0 mL/min
Injection volume:	5 µL of 250 µg/mL
Temperature:	30 °C
Detection:	UV @ 265 nm
Instrument:	Alliance 2695, 2996 PDA

Mobile Phase pH	USP Tailing
3.0	1.22
7.0	1.62
10.0	1.26

Results and Discussion



Featured Products

Alliance HPLC System <<https://www.waters.com/534293>>

2998 Photodiode Array (PDA) Detector <<https://www.waters.com/1001362>>

WA20738.055, June 2002