

응용 자료

## Fluoxetine - pH 2.5, LC-MS

---

Waters Corporation



This is an Application Brief and does not contain a detailed Experimental section.

---

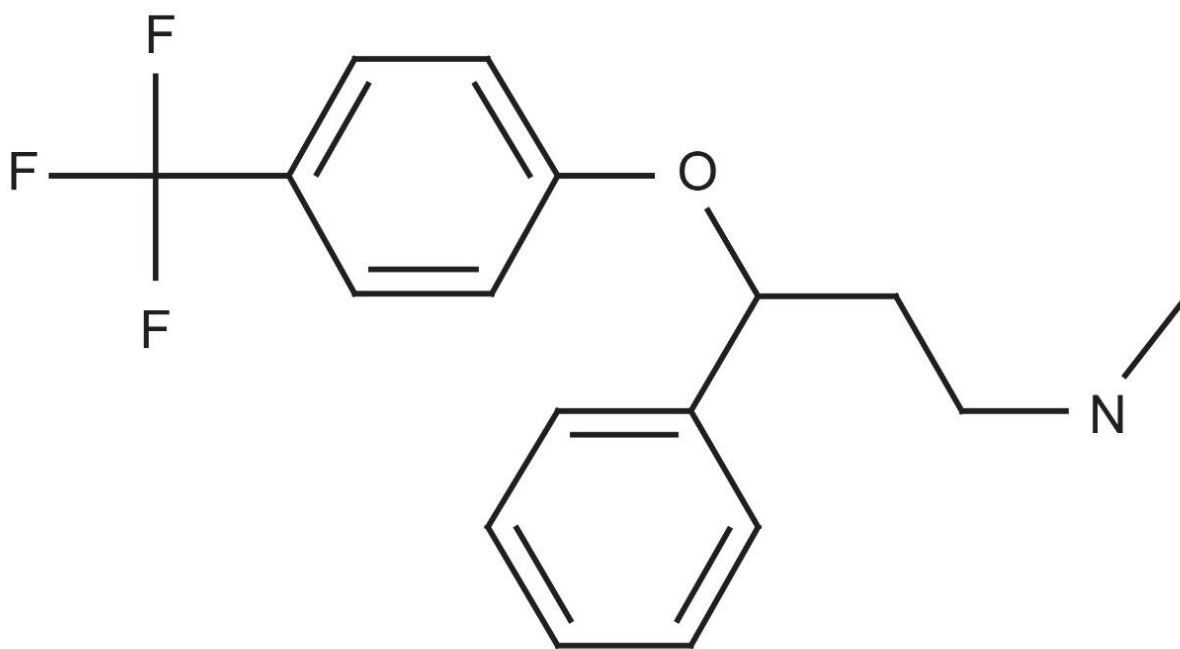
### Abstract

This application brief highlights the analysis of fluoxetine using XTerra MS C<sub>18</sub> Columns.

---

## Introduction

The compound analyzed in this study is fluoxetine.



# Fluoxetine

---

## Experimental

### Conditions

Column:	XTerra MS C <sub>18</sub> 2.1 x 30 mm, 3.5 μm
Part number:	186000398

Mobile phase A:	0.1% HCOOH in H <sub>2</sub> O
Mobile phase B:	0.1% HCOOH in ACN
Flow rate:	0.2 mL/min to MS
Isocratic mobile phase composition:	75%A; 25%B
Injection volume:	20 µL of 100 pg/µL
Temperature:	Ambient
Detection:	MS ESI+, SIR 485.4
Instrument:	Alliance 2795 HT, Micromass ZQ

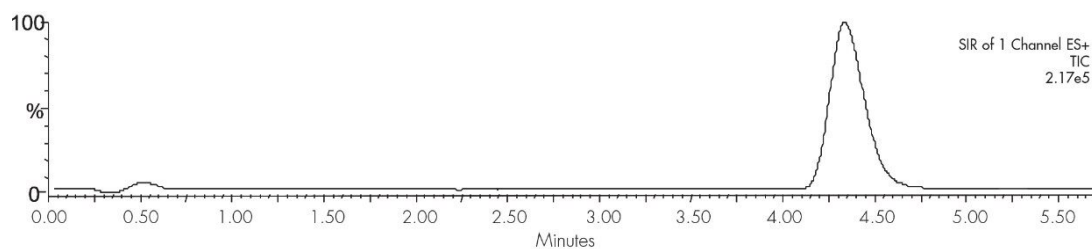
## MS Conditions

Micromass ZQ	ESI+
Capillary (KV):	3.0
Cone (V):	45
Extractor:	3.0
RF lens:	0.5
Source temp.:	150
Desolvation temp.:	350
Cone gas flow (L/Hr):	60
Desolvation gas flow (L/Hr):	500

Micromass ZQ	ESI+
LM resolution:	15
HM resolution:	15
Ion energy:	1.0
Multiplier (V):	650

---

## Results and Discussion



---

## Featured Products

Alliance HPLC System <<https://www.waters.com/534293>>

WA20738.053, June 2002

