

Note d'application

Fluoxetine - pH 2.5, LC-MS

Waters Corporation



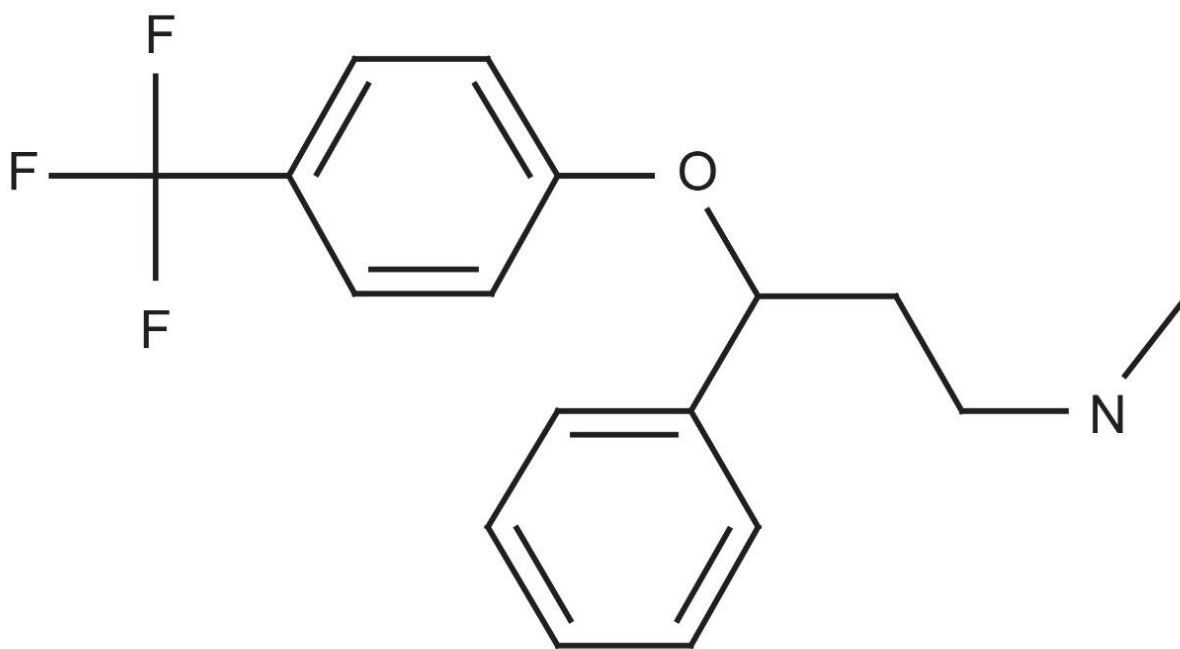
This is an Application Brief and does not contain a detailed Experimental section.

Abstract

This application brief highlights the analysis of fluoxetine using XTerra MS C₁₈ Columns.

Introduction

The compound analyzed in this study is fluoxetine.



Fluoxetine

Experimental

Conditions

Column: XTerra MS C₁₈ 2.1 x 30 mm, 3.5 μm

Part number: 186000398

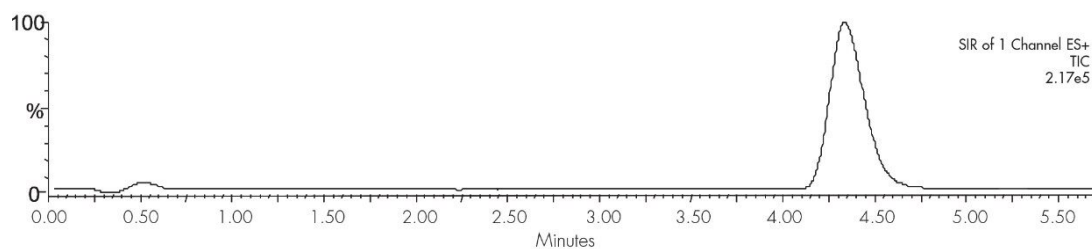
Mobile phase A:	0.1% HCOOH in H ₂ O
Mobile phase B:	0.1% HCOOH in ACN
Flow rate:	0.2 mL/min to MS
Isocratic mobile phase composition:	75%A; 25%B
Injection volume:	20 µL of 100 pg/µL
Temperature:	Ambient
Detection:	MS ESI+, SIR 485.4
Instrument:	Alliance 2795 HT, Micromass ZQ

MS Conditions

Micromass ZQ	ESI+
Capillary (KV):	3.0
Cone (V):	45
Extractor:	3.0
RF lens:	0.5
Source temp.:	150
Desolvation temp.:	350
Cone gas flow (L/Hr):	60
Desolvation gas flow (L/Hr):	500

Micromass ZQ	ESI+
LM resolution:	15
HM resolution:	15
Ion energy:	1.0
Multiplier (V):	650

Results and Discussion



Featured Products

Alliance HPLC System <<https://www.waters.com/534293>>

WA20738.053, June 2002

