

Nota de aplicación

Doxepin

Waters Corporation



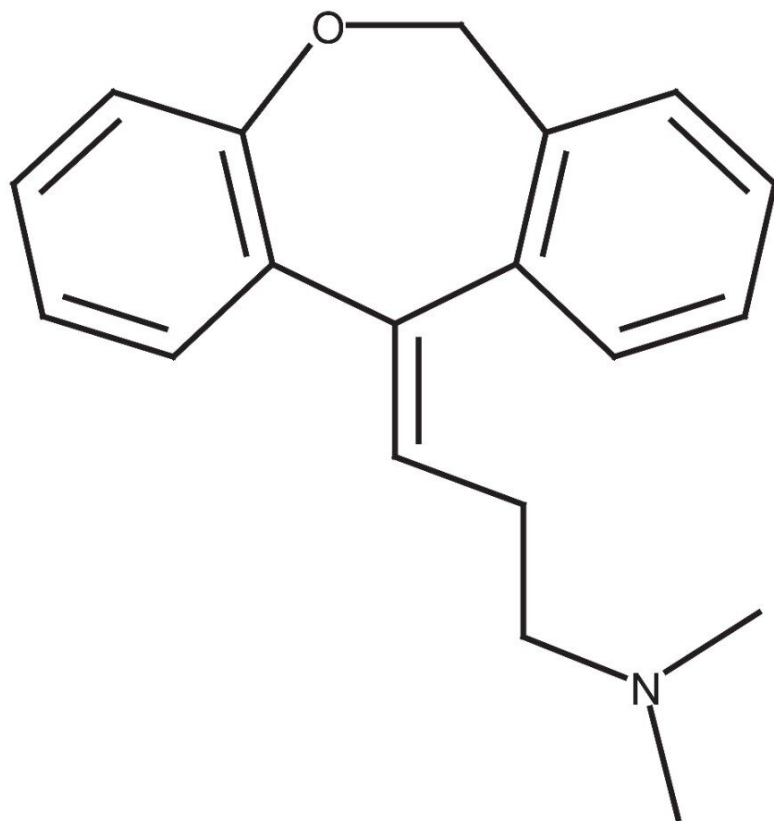
This is an Application Brief and does not contain a detailed Experimental section.

Abstract

This application brief demonstrates analysis of doxepin.

Introduction

The compound analyzed in this study is doxepin.



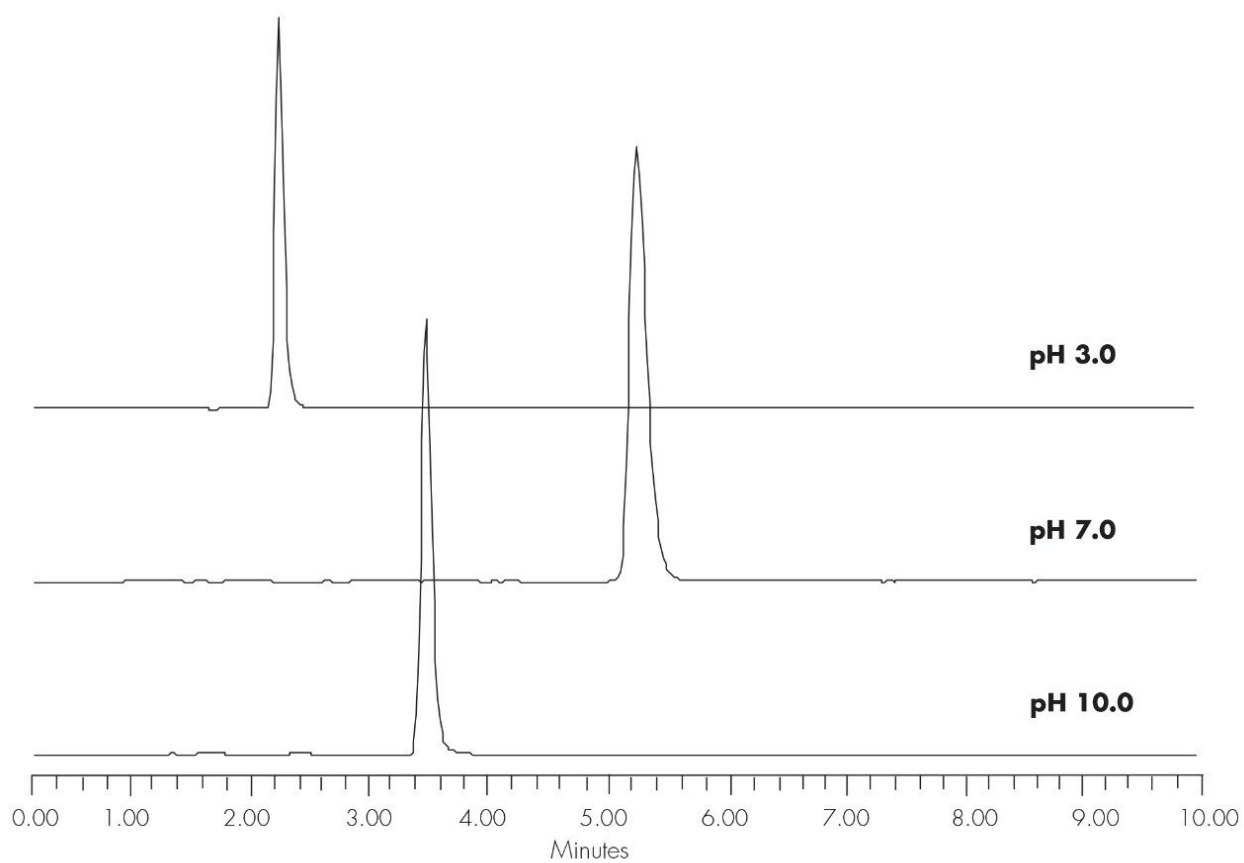
Doxepin

Experimental

Conditions

Column:	Xterra RP ₁₈ 4.6 x 150 mm, 5 µm
Part number:	186000492
Mobile phase:	pH 3.0: H ₂ O/ACN/100 mM NH ₄ COOH, pH 3.0 40:50:10 pH 7.0: H ₂ O/ACN/100 mM NH ₄ HCO ₃ , pH 7.0 50:40:10 pH 10.0 H ₂ O/ACN/100 mM NH ₄ HCO ₃ , pH 10.0 20:70:10
Flow rate:	1.0 mL/min
Injection volume:	5 µL of 250 µg/mL
Temperature:	30 °C
Detection:	UV @ 260 nm
Instrument:	Alliance 2695, 2996 PDA
Mobile Phase pH	USP Tailing
3.0	1.25
7.0	1.36
10.0	1.17

Results and Discussion



Featured Products

Alliance HPLC System <<https://www.waters.com/534293>>

WA20738.044, June 2002

