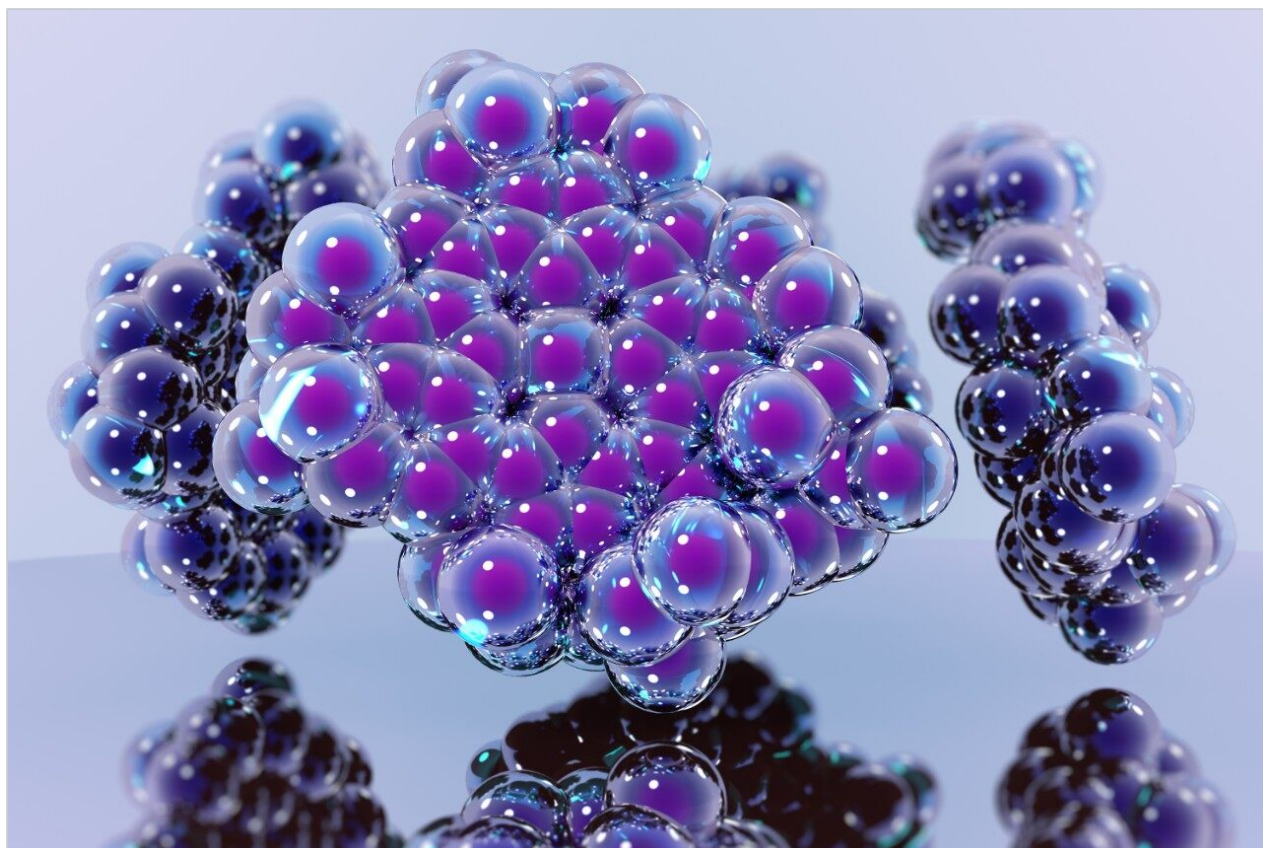


응용 자료

Cytochrome C Tryptic Digest - pH 2.5, XTerra MS C₁₈

Waters Corporation



This is an Application Brief and does not contain a detailed Experimental section.

Abstract

This application brief highlights the analysis of cytochrome C using XTerra MS C₁₈ Columns.

Introduction

Cytochrome C has been analyzed in this study.

Experimental

HPLC Conditions

Column:	XTerra MS C ₁₈ 4.6 x 50 mm, 3.5 μm (p/n: 186000432)
Mobile phase A:	H ₂ O
Mobile phase B:	ACN
Mobile phase C:	100 mM HCOOH, pH 2.5
Flow rate:	0.75 mL/min, 0.2 mL/min to MS
Injection volume:	50 μL (25 μg)
Temperature:	Ambient
Detection:	MS ESI+
Instrument:	Alliance 2695, Micromass ZQ

Gradient

Time (min)	Profile		
	%A	%B	%C
0.0	90	0	10
45.0	50	40	10
45.0	10	80	10
50.0	10	80	10

MS Conditions

MS sytem: Micromass ZQ

Ion source: ESI+

Capillary: 3.5 kV

Cone: 30 V

Extractor: 3.0

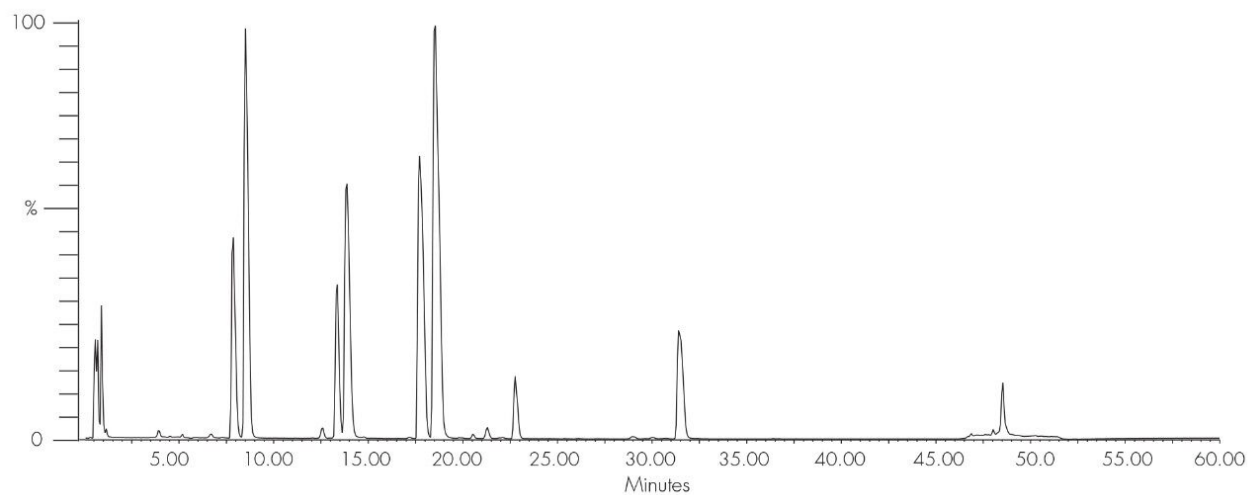
Source temp.: 150 °C

Desolvation temp.: 400 °C

Cone gas flow: 60 L/hr

Desolvation gas flow: 550 L/hr

Results and Discussion



Featured Products

Alliance HPLC <<https://www.waters.com/514248>>

WA20738.031, June 2002