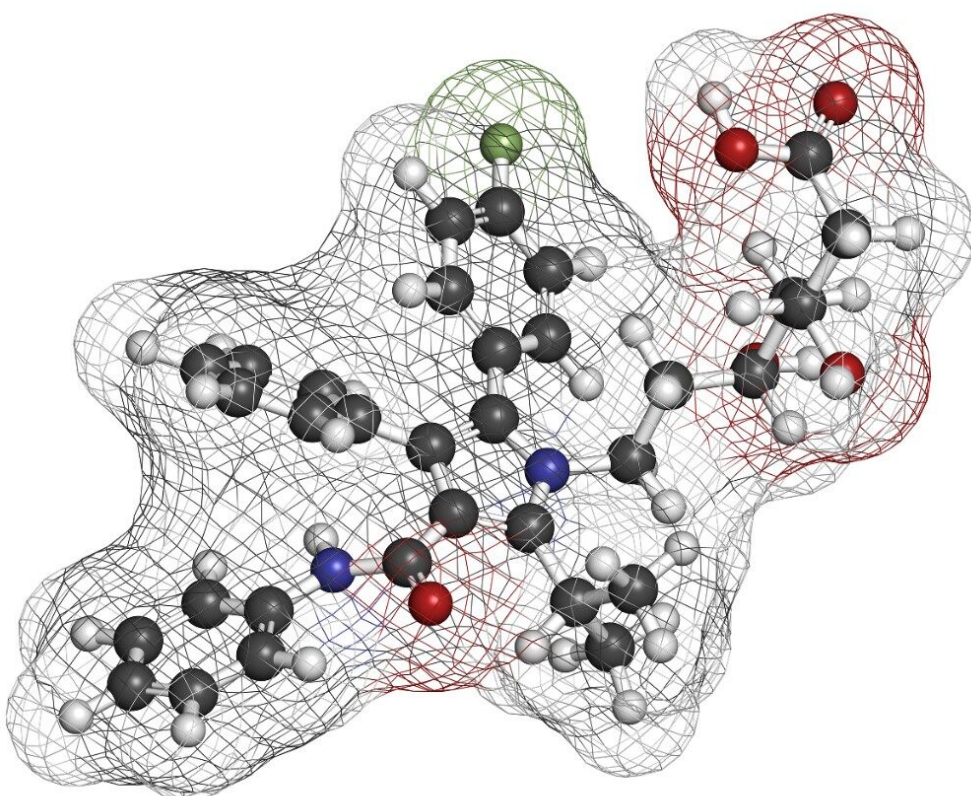




Atorvastatin - XTerra RP₁₈

Waters Corporation



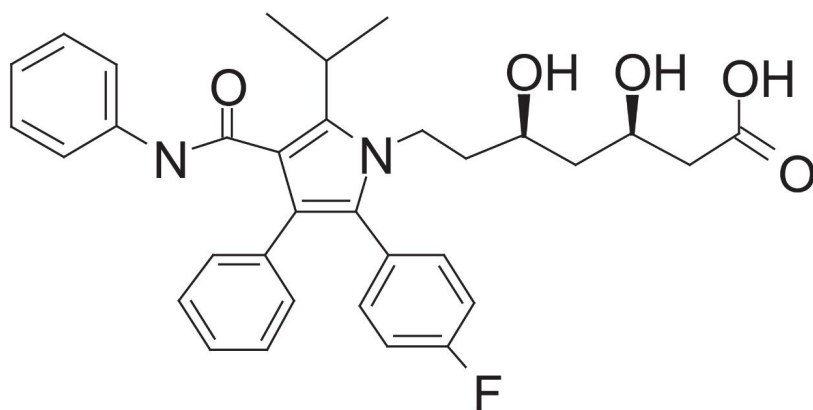
This is an Application Brief and does not contain a detailed Experimental section.

Abstract

This application brief demonstrates the analysis of atorvastatin using XTerra RP₁₈ Columns.

Introduction

In this study the compound analyzed is atorvastatin.



Atorvastatin

Experimental

Conditions

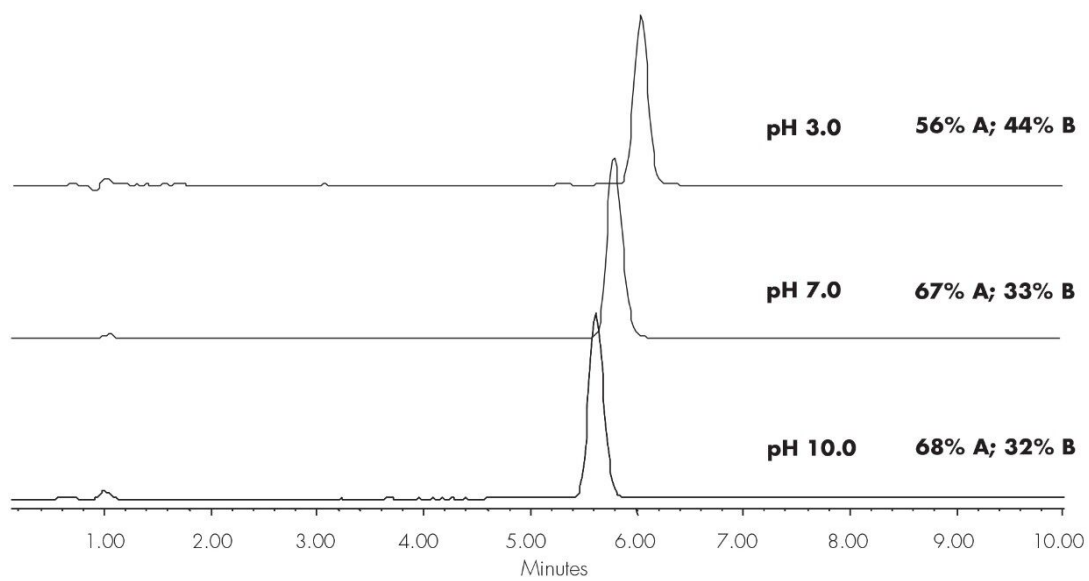
Column:	XTerra RP ₁₈ 4.6 x 100 mm, 3.5 µm
Part number:	186000438
Mobile phase A:	10 mM NH ₄ COOH, pH 3.0
Mobile phase A:	10 mM NH ₄ HCO ₃ , pH 7.0
Mobile phase A:	10 mM NH ₄ HCO ₃ , pH 10.0
Mobile phase B:	ACN

Isocratic Conditions as Indicated

Flow rate:	1.4 mL/min
Injection volume:	2 µL
Sample Concentration:	0.25 mg/mL
Temperature:	30 °C
Detection:	UV @ 254 nm
Instrument:	Alliance 2795 HT, 2996 PDA

Mobile Phase pH	USP Tailing
3.0	1.04
7.0	1.19
10.0	1.11

Results and Discussion



Featured Products

WA20738.014, June 2002