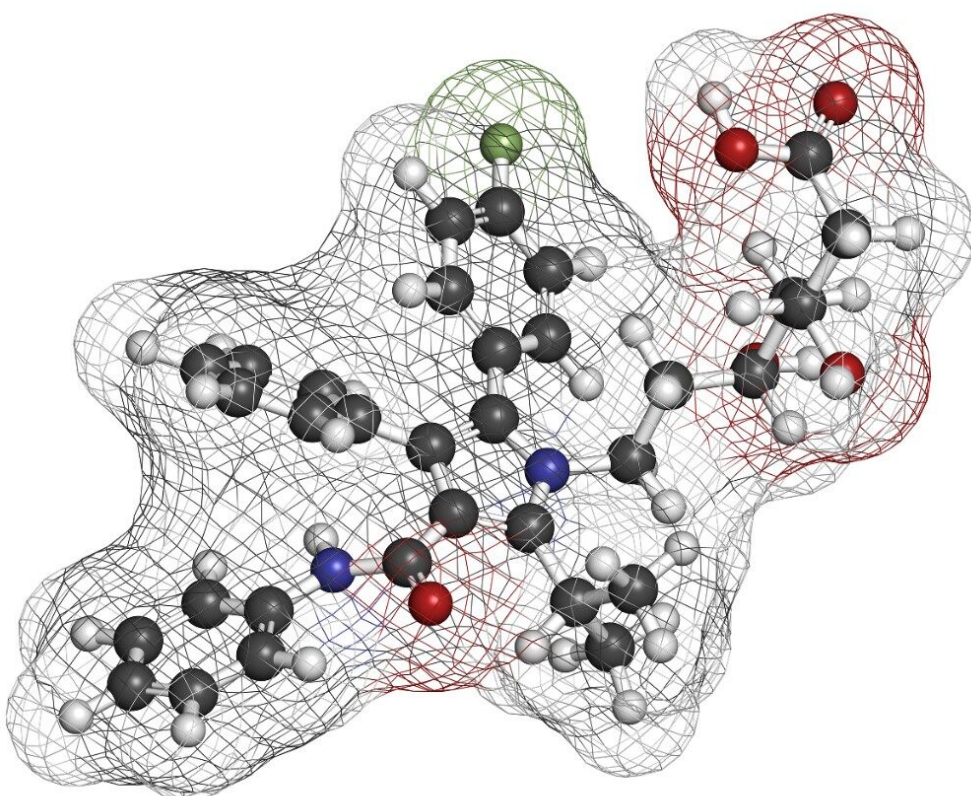


Atorvastatin - XTerra MS C₁₈

Waters Corporation



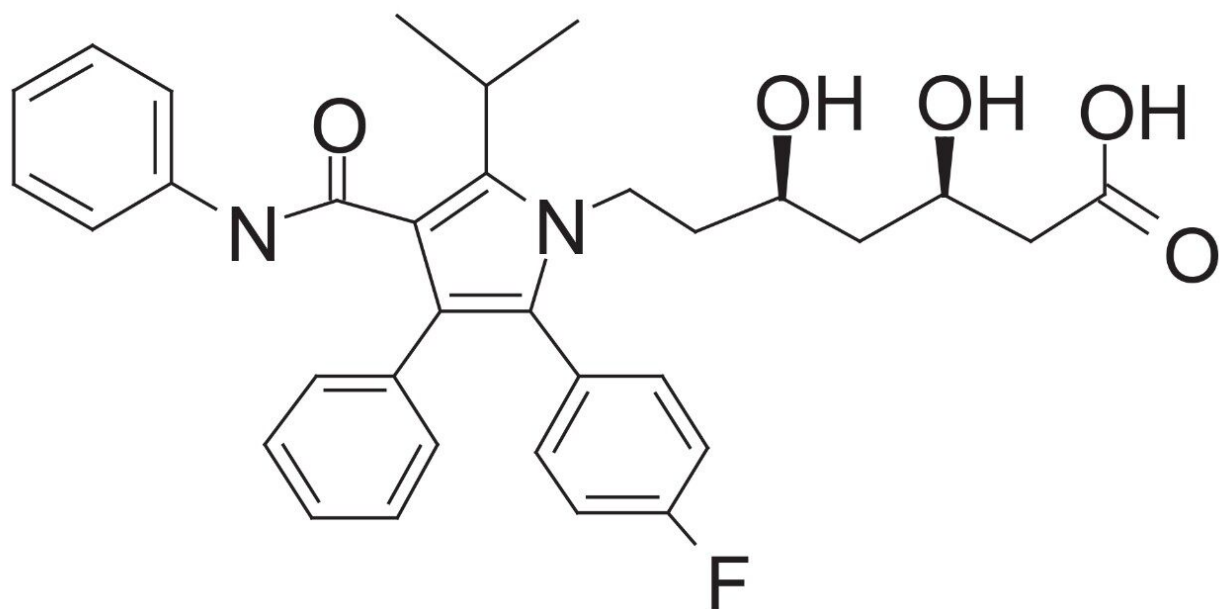
This is an Application Brief and does not contain a detailed Experimental section.

Abstract

This application brief demonstrates the analysis of atorvastatin using XTerra MS C₁₈ Columns.

Introduction

In this study the compound analyzed is atorvastatin.



Atorvastatin

Atorvastatin

Experimental

Conditions

Column: XTerra MS C₁₈ 4.6 x 100 mm, 3.5 μm

Part number: 186000436

Mobile phase A:	10 mM NH ₄ COOH, pH 3.0
-----------------	------------------------------------

Mobile phase A:	10 mM NH ₄ HCO ₃ , pH 7.0
-----------------	---

Mobile phase A:	10 mM NH ₄ HCO ₃ , pH 10.0
-----------------	--

Mobile phase B:	ACN
-----------------	-----

Isocratic Conditions as Indicated

Flow rate:	1.4 mL/min
------------	------------

Injection volume:	2 µL
-------------------	------

Sample Concentration:	0.25 mg/mL
-----------------------	------------

Temperature:	30 °C
--------------	-------

Detection:	UV @ 254 nm
------------	-------------

Instrument:	Alliance 2795 HT, 2996 PDA
-------------	----------------------------

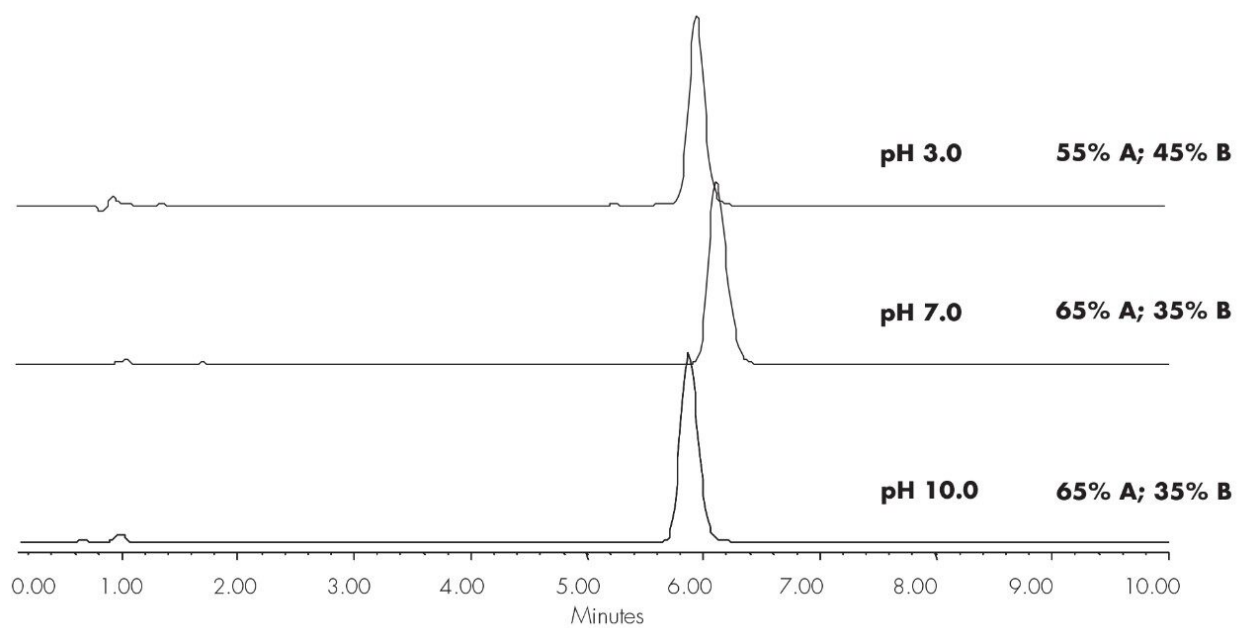
Mobile Phase pH	USP Tailing
-----------------	-------------

3.0	1.06
-----	------

7.0	1.23
-----	------

10.0	1.15
------	------

Results and Discussion



Featured Products

WA20738.013, June 2002