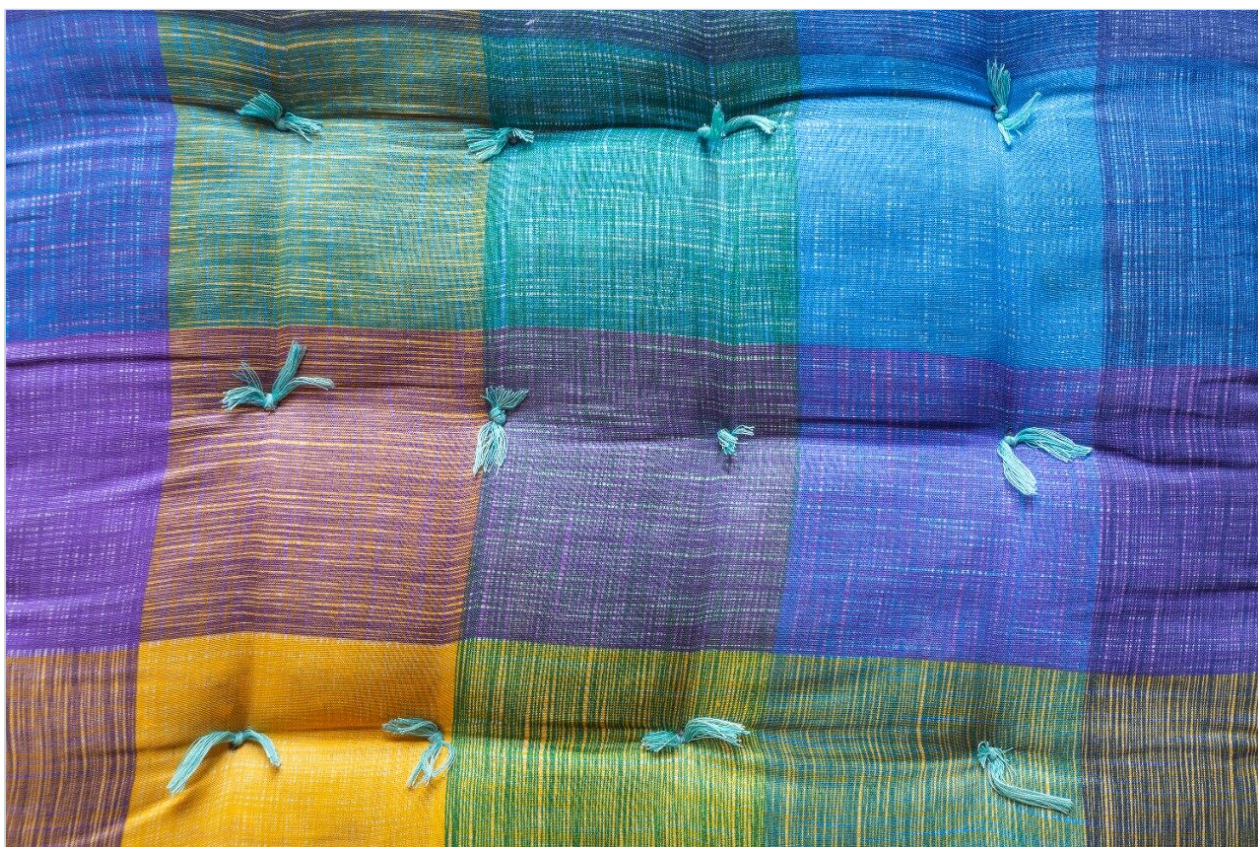


Anilines - 2.0 Min Gradient

Waters Corporation



This is an Application Brief and does not contain a detailed Experimental section.

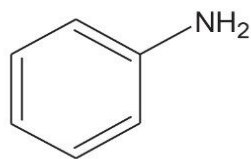
Abstract

This application brief demonstrates analysis of anilines.

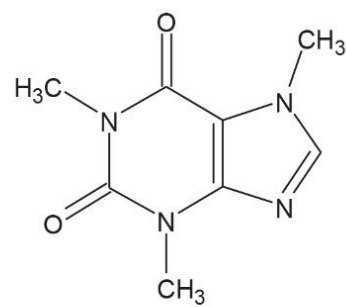
Introduction

The compounds used in this study are –

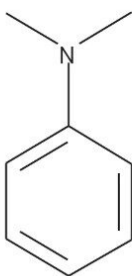
1. Caffeine
2. Aniline
3. N-Methylaniline
4. 4-Nitroanisole
5. N,N-Dimethylaniline



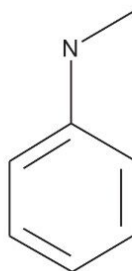
Aniline



Caffeine



N,N-Dimethylaniline



N-Methylaniline



4-Nitroanisole

Experimental

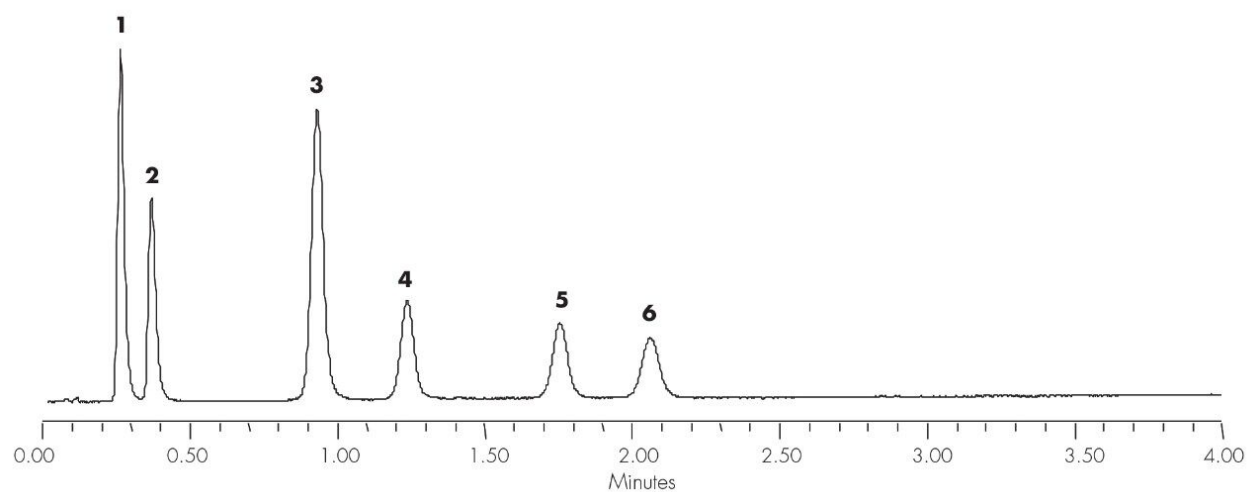
Conditions

Column:	Xterra MS C ₁₈ 4.6 x 20 mm, 3.5 µm
Part number:	186001891
Mobile phase A:	H ₂ O
Mobile phase B:	ACN
Mobile phase C:	100 mM NH ₄ HCO ₃ , pH 10.0
Flow rate:	3.0 mL/min
Injection volume:	5.0 µL
Sample concentration:	20 µg/mL
Temperature:	30 °C
Detection:	UV @ 254 nm
Instrument:	Alliance 2795, 2996 PDA

Gradient

Time (min)	Profile		
	%A	%B	%C
0.0	80	10	10
2.0	50	40	10

Results and Discussion



Featured Products

Alliance HPLC System <<https://www.waters.com/534293>>

WA20738.010, June 2002