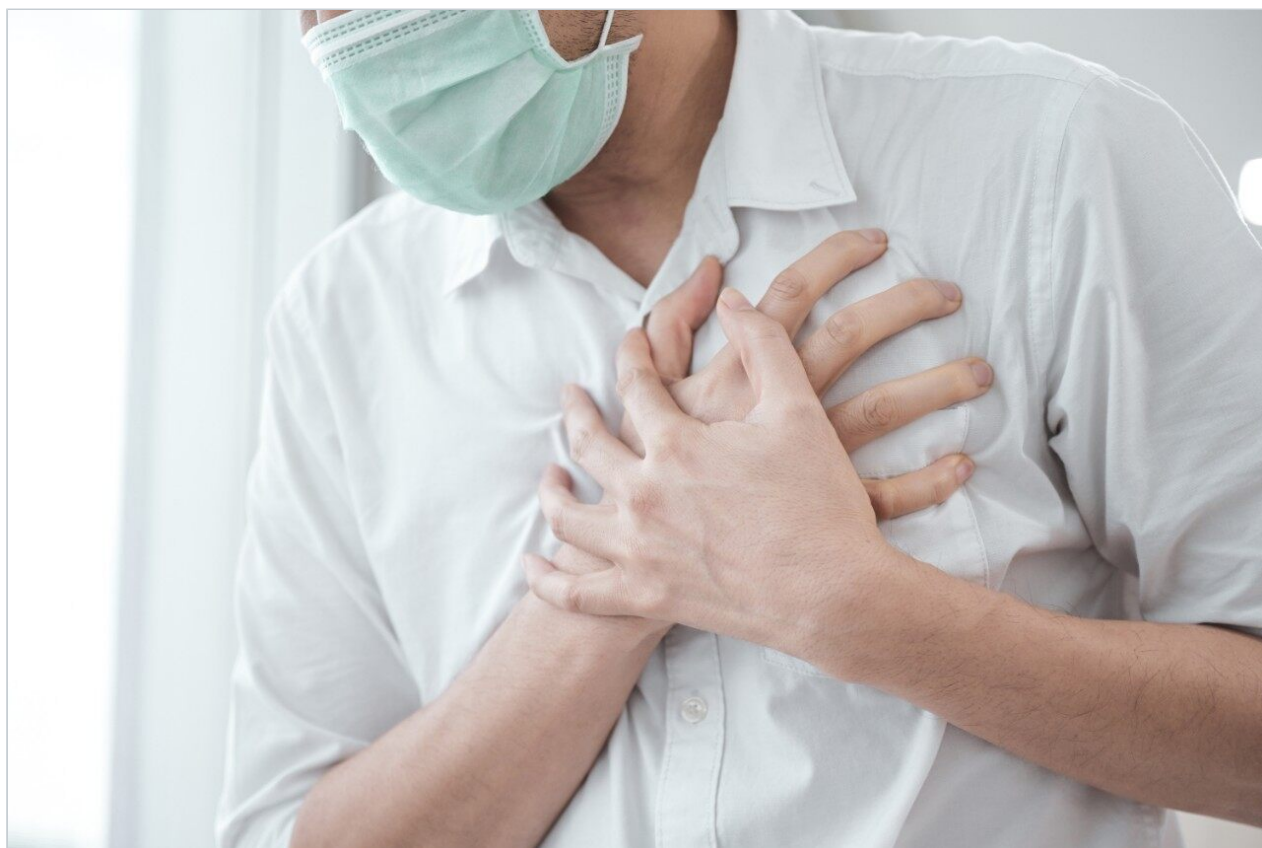


Nota applicativa

Alprenolol - Isocratic, LC-MS

Waters Corporation



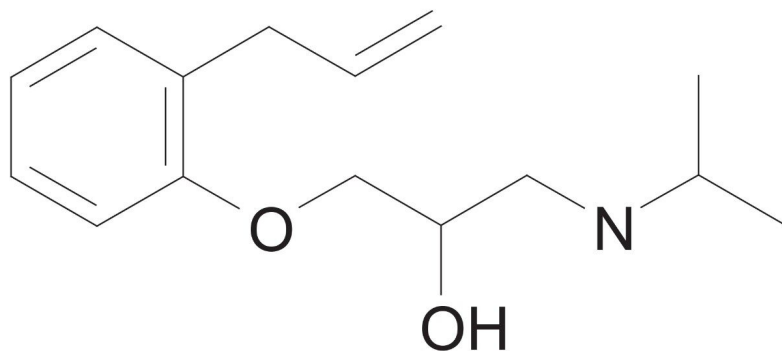
This is an Application Brief and does not contain a detailed Experimental section.

Abstract

This application brief demonstrates analysis of alprenolol.

Introduction

The compound analyzed in this study is alprenolol.



Alprenolol

Experimental

Isocratic LC Conditions

| | |
|-------------------------------------|---|
| Column: | Xterra MS C ₁₈ 2.1 x 30 mm, 3.5 μm |
| Part number: | 186000398 |
| Mobile phase A: | 0.1% HCOOH, pH 2.5 |
| Mobile phase B: | 0.1% HCOOH in ACN |
| Flow rate: | 0.2 mL/min to MS |
| Isocratic mobile phase composition: | 85% A: 15% B |

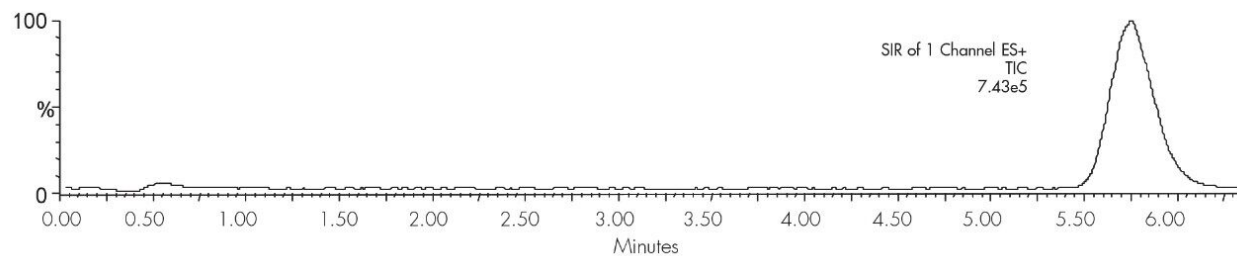
| | |
|-------------------|----------------------------------|
| Injection volume: | 20 µL of 100 µg/mL |
| Temperature: | Ambient |
| Detection: | MS ESI ⁺ , SIR 250.19 |
| Instrument: | Alliance 2795 HT, Micromass ZQ |

MS Conditions

Micromass ZQ ESI⁺

| | |
|------------------------------|-----|
| Capillary (KV): | 3 |
| Cone (V): | 30 |
| Extractor: | 3 |
| RF lens: | 0.5 |
| Source temp.: | 150 |
| Desolvation temp.: | 350 |
| Cone gas flow (L/Hr): | 60 |
| Desolvation gas flow (L/Hr): | 500 |
| LM resolution: | 15 |
| HM resolution: | 15 |
| Ion energy: | 1 |
| Multiplier (V): | 650 |

Results and Discussion



Featured Products

Alliance HPLC System <<https://www.waters.com/534293>>

WA20738.008, June 2002