

**To successfully quantify, identify and characterize even the lowest abundant components, do you:**

- Require routine high resolution and mass measurement accuracy in MS and MS/MS?
- Strive to routinely perform quantitative analyses over a larger dynamic range?
- Want to significantly improve detection limits for modified components?
- Need a high performance LC/MALDI/MS/MS system?
- Want a fast MS system designed for UPLC™-enabled separations?

## The next generation of Q-ToF™ technology

Introducing Waters® Q-ToF Premier™ Mass Spectrometer, the next generation exact mass API/MALDI MS/MS platform for the Pharmaceutical, Biotechnology and Life Science industries. The Q-ToF Premier Mass Spectrometer, featuring T-Wave™ (Travelling Wave) technology, offers significant enhancements in mass measurement accuracy, dynamic range (pDRE™), sensitivity (Enhanced Duty Cycle) and speed. If you want to quantify, identify and characterize compounds from simple or complex mixtures, Waters Q-ToF Premier offers the finest blend of innovative analytical capabilities for results you'll have the ultimate confidence in.

## A new analytical paradigm: Ultra Performance Q-ToF LC/MS/MS

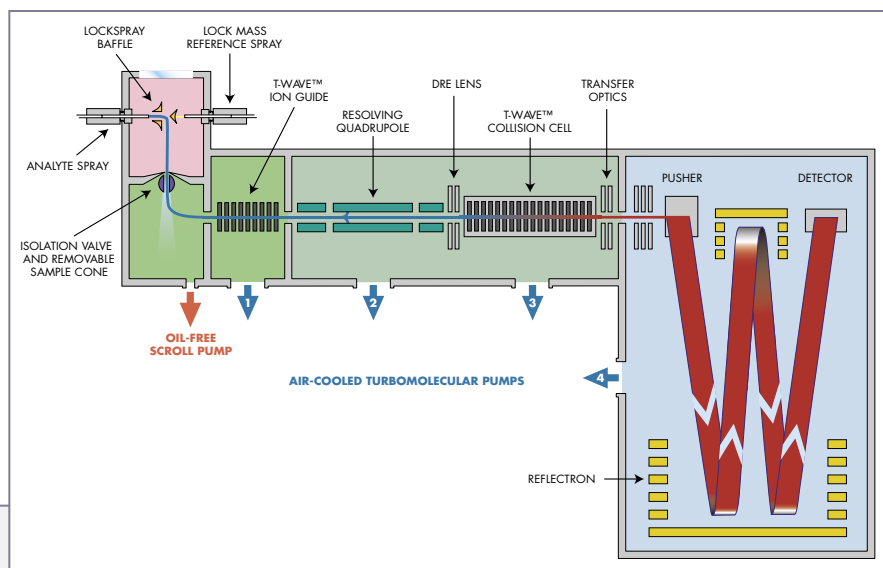
Waters Q-ToF Premier mass spectrometer is the first compact exact mass LC/MS/MS platform to incorporate ACQUITY Ultra Performance LC™ technology. The ACQUITY UPLC™ system marks an unparalleled breakthrough in separations science, with innovative technologies that enable significant improvements in performance for your application. So if you need to characterize mixtures with the ultimate in resolution, sensitivity and speed or require a simple, easy-to-use, direct nanoflow solution (nanoACQUITY UPLC™) with unparalleled retention time reproducibility, look no further than Ultra Performance Q-ToF LC/MS/MS.



*Waters® Protein Expression Profiling LC/MS/MS System incorporates the Q-ToF Premier™ Mass Spectrometer, nanoACQUITY UPLC™ system as well as Masslynx™, Expression Informatics, and ProteinLynx™ Global SERVER 2.1 software.*

## The Premier™ Technology Platform

The Q-ToF Premier is a hybrid orthogonal acceleration Time-of-Flight (oa-ToF) mass spectrometer that enables automated exact mass measurement of precursor and fragment ions to yield the highest confidence in structural elucidation and databank search results.



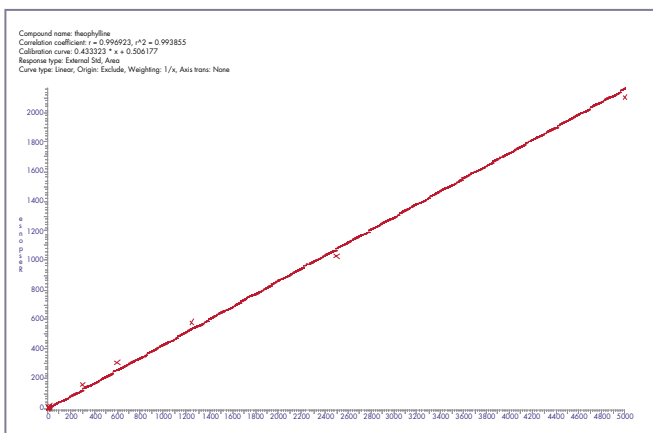
*API (ZSpray™) enabled on the Q-ToF Premier. This illustration shows the instrument in the MS/MS mode of operation with W-Optics enabled.*

The Q-ToF Premier is a high performance platform for MS and MS/MS analyses incorporating:

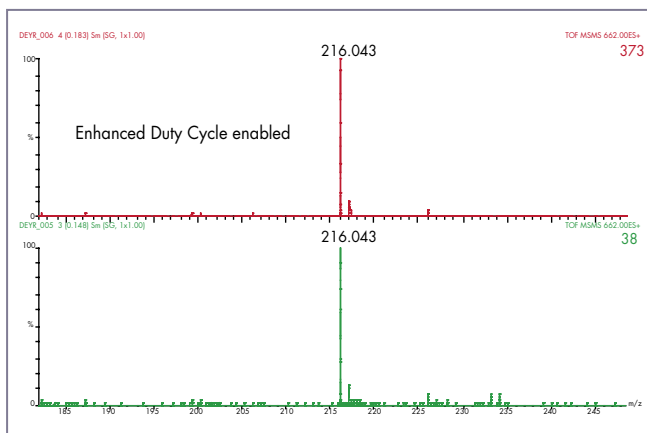
- **High sensitivity**—High transmission efficiency of ZSpray™ source technology, T-Wave™ ion optics, T-Wave collision cell and oa-ToF transmission result in high sensitivity
- **High resolution**—Up to 17,500 FWHM with W-Optics™
- **High mass measurement capability**—Routine exact mass measurement (3 ppm RMS) in MS and MS/MS with LockSpray™ and NanoLockSpray™
- **Enhanced speed**—Faster TDC (4 GHz) delivers acquisition speeds of up to 20 spectra per second—compatible with UPLC-based separations
- **Dynamic Range Enhancement (pDRE™)**—Equipped with programmable DRE function, which enables quantitation and exact mass measurement over 4 orders of magnitude
- **Enhanced Duty Cycle**—Enables enhanced sensitivity over targeted m/z ranges for detection of modified components (e.g. in Precursor Ion Discovery™)
- **MALDI**—Exchangeable vacuum MALDI source enabling large scale MALDI MS and MS/MS analyses—compatible with 96- and 384-spot target plates
- **Resolving quadrupole**—4, 8 and 32k Da options
- **m/z range**—up to 100,000 in V-Optics™
- **Intelligent, automated MS/MS acquisition**—Data Directed Analysis™ (DDA™) and Precursor Ion Discovery
- **Source options**—LockSpray, NanoLockSpray, IonSABRE™, APCI™, ESCi™ and APPI™
- **Ergonomics**—New industrial design, reduced instrument footprint

## programmable Dynamic Range Enhancement (pDRE™)

The full mass range spectra produced by the Q-ToF Premier enables a wide range of components, both known and unknown, to be detected from mixtures with high sensitivity. In the characterization of such components, they may be present in a wide range of concentrations. Programmable Dynamic Range Enhancement delivers up to 4 orders of magnitude for exact mass measurement and linear quantitative analysis of complex mixtures.



Theophylline measured over the concentration range 0.5-5000 ng/mL, demonstrating 4 orders linear dynamic range using pDRE.



With the Enhanced Duty Cycle function enabled, the phosphorylated immonium "marker" ion at  $m/z$  216 is detected with 10x signal.

## Enhanced Duty Cycle

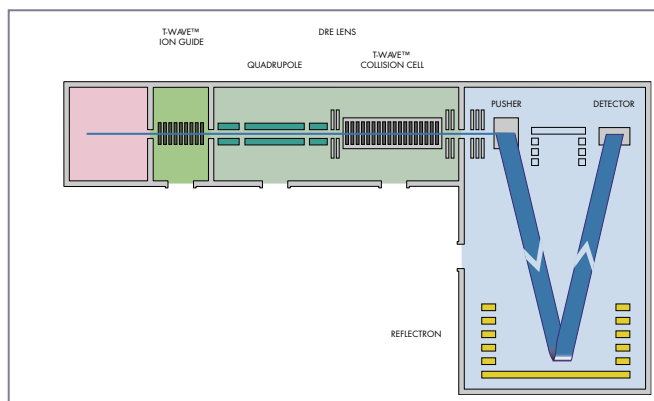
The characterization of candidate drugs and biomolecules requires the detection and structural elucidation of modifying groups, which are frequently present at low abundance. Precursor Ion Discovery can be used to target your MS/MS analyses for modified components by automatically monitoring for diagnostic product ions. By synchronizing the operation of the T-Wave collision cell with the  $\alpha\alpha$ -ToF analyzer, the instrument duty cycle can be significantly enhanced, resulting in higher sensitivity for the selected product ion of interest.

## MALDI MS and MS/MS

Sequence coverage in proteomics studies can be increased by employing both MALDI and Electrospray Ionization. The Q-ToF Premier can be configured with an optional vacuum MALDI source enabling MS and MS/MS analyses to be carried out easily with high resolution, sensitivity and mass measurement accuracy.

The high quality MALDI/MS/MS data produced by the Q-ToF Premier enables:

- An increase in protein identifications and protein sequence coverage
- Elimination of false positive protein identifications apparent in nominal mass data
- Significant improvement of *de novo* sequencing compared to post-source decay (PSD) techniques



MALDI enabled on the Q-ToF Premier. This illustration shows the instrument in the MS mode of operation with V-Optics enabled.

## Sales Offices:

**Austria** 43 1 877 18 07

**Australia** 61 2 9933 1777

**Belgium and Luxembourg** 32 2 726 1000

**Brazil** 55 11 5543 7788

**Canada** 800 252 4752 X2205

**Czech Republic** 420 2 617 11384

**Denmark** 45 46 59 8080

**Finland** 358 9 506 4140

**France** 33 1 3048 7200

**Germany** 49 6196 400600

**Hong Kong** 852 29 64 1800

**Hungary** 36 1 350 5086

**India** 91 80 2837 1900

**Ireland** 353 1 448 1500

**Italy** 39 02 27 4211

**Japan** 81 3 3471 7191

**Korea** 82 2 820 2700

**Mexico** 52 55 5524 7636

**The Netherlands** 31 76 508 7200

**Norway** 47 6 384 6050

**People's Republic of China**

86 10 8451 8918

**Poland** 48 22 833 4400

**Puerto Rico** 787 747 8445

**RUSSIA/CIS** 7 095 931 9193

**Singapore** 65 6278 7997

**Spain** 34 93 600 9300

**Sweden** 46 8 555 11 500

**Switzerland** 41 62 889 2030

**Taiwan** 886 2 2543 1898

**UK** 44 208 238 6100

**USA** 800 252 4752

WATERS CORPORATION

34 Maple St.

Milford, MA 01757 U.S.A.

T: 508 478 2000

F: 508 872 1990

www.waters.com

## Chromatography-based columns and reagents

Speed and sensitivity are optimized by choosing the correct column and extraction products.

- **ACQUITY Ultra Performance LC™ Columns**—ACQUITY UPLC columns incorporate Waters' patented 1.7 µm Hybrid Particle Technology (HPT) and offer high efficiency, pressure tolerant, second-generation hybrid materials. Featured in the ACQUITY UPLC column is an eCord™ that records the number of injections, backpressures and temperature fluctuations of the column, and carries the Waters Certificate of Analysis.
- **Symmetry® and Symmetry300™ Columns**—To meet your LC/MS method development needs, Symmetry columns provide the highest standard of "column-to-column" reproducibility with unmatched peak symmetry for maximum sensitivity and accurate quantification.
- **Atlantis™ Columns**—Atlantis columns are a difunctionally bonded, silica-based C<sub>18</sub> offering that combines superior polar compound retention with exceptional peak shape and full LC/MS compatibility.
- **XTerra® MS Columns**—XTerra MS columns, based on a combination of our most inert particle and trifunctional reversed-phase bonding technology, are ideally suited for mass spectrometry applications.
- **NanoEase™ and nanoACQUITY UPLC™ Columns**—A complete series of capillary, nano, and trapping column technologies to effectively capture, concentrate, and separate peptides and other biological compounds in either 1D or 2D LC or LC/MS applications.
- **RapiGest™ SF**—An enabling HPLC and LC/MS-friendly surfactant for qualitatively improved "in-gel" and "in-solution" protein digestions.

## Worldwide services and support

Waters Connections® Programs provide the solutions you need to maintain uptime across your Waters systems.

- Analytical Instrumentation and Software Services include Total Assurance Plans and Warranties that extend and enhance the original warranty you receive when you buy a Waters product. These plans minimize the level of insurance investment and deliver the value you need to avoid costly and time-consuming system downtime.
- Connections Compliance Services provide you with timely and cost-efficient solutions for your regulatory compliance challenges. You can use Waters Compliance Services to verify proper equipment operation for CGMP/GLP compliance, significantly reducing operating costs.
- Connections University is the center of our Educational Services, providing extensive HPLC and MS training and education at your site, at our corporate headquarters or at our local offices around the world.
- Representatives of Waters Global Customer Assurance Organization, trained and certified in all Waters products and current in HPLC and MS applications, are available in person, on the phone, via FAX or at [www.waters.com](http://www.waters.com) to answer questions and provide you with service, support and information.

Waters, Micromass, Q-ToF, Q-ToF Premier, Ultra Performance LC, UPLC, ACQUITY Ultra Performance LC, ACQUITY UPLC, nanoACQUITY UPLC, T-Wave, Masslynx, Proteinlynx, ZSpray, LockSpray, NanoLockSpray, W-Optics, V-Optics, Data Directed Analysis, DDA, pDRE, Precursor Ion Discovery, IonSABRE, ESCI, eCord, Symmetry, Symmetry300, Atlantis, XTerra, NanoEase, RapiGest and Connections are trademarks of Waters Corporation.

All other trademarks are the property of their respective owners.

©2004 Waters Corporation Printed in the U.S.A. July 2004 720000869EN LW-CV

